

PARISH NEWS

SPRING 2023

online at stpeterslimpsfield.org/parish-news



Holy Week and Easter

SUNDAY 2 APRIL
PALM SUNDAY
8am Holy Communion
10.15am Parish Eucharist*

The Palm Sunday procession
will start from The Bull, please
meet in the car park at 10am.

THURSDAY 6 APRIL
Maundy Thursday
8pm Eucharist*

FRIDAY 7 APRIL
GOOD FRIDAY
2pm Liturgy*

SUNDAY 9 APRIL
EASTER SUNDAY
8am Holy Communion
10am Festive Eucharist*

Please bring a flower with you
to put in the Easter cross to
celebrate the Resurrection.

*The following services will also be live-streamed

Dear Friends,

Well, we are already in February that point in the church calendar when we sit between the two major Christian festivals of Christmas and Easter, a time for us to reflect back and to look forward. 2022 is the first Christmas we were able to fully celebrate since the pandemic and what a Christmas it was! We held services galore and everyone flooded in, to be precise 1661 people came through our doors to sing carols and to hear afresh the 'good news' of the birth of our Lord.

As the days begin to get a bit longer and green shoots are beginning to appear we now turn our faces towards Lent, a time which marks the 40 days Jesus spent fasting in the desert.

Holy Week begins on **Palm Sunday (2 April)**. Our service will begin in the carpark outside The Bull at 10:00am and we will walk down the high street waving palms and signing the hymn, All Glory Laud and Honour, this reminds us of Jesus' triumphal entry into Jerusalem. **6 April is Maundy Thursday** and again we will hold a service at 8pm, there will be a symbolic washing of feet and we will commemorate the Last Supper which Jesus ate with his disciples whilst here on earth. On **Good Friday (7 April)** at 2pm we will recall the sacrifice of love Jesus made for each one of us. Holy Week will culminate at 10am on **Easter Day (9 April)** when we will look upwards again and celebrate Christ's resurrection, that is the hope given to each of us that we will 'rest eternal with the one who created us.'

As your Rector I would like to invite you into the joy and hope that Easter brings. Do join us for any or all of these services, we are a community who welcomes all without question or conditions and we would love to see you. If, however, church is a step too far and you would just like someone to talk to then know that I'm always available to visit you in your home.

With my love and prayers,

Rev. Helen

Cover: Stanhopes Green by Marianne Bell



Team Rector of Limpsfield & Titsey:

The Rev Helen Cook
Email: hjwcook@yahoo.co.uk

01883 unless stated
07530 609511

Clergy of the Limpsfield & Tatsfield Team Ministry

The Rev Paul Perkin (St Andrew's)
Email: paul.perkin6@gmail.com

412454

St Mary's Tatsfield (Team Vicar - Interregnum)

St Peter's Parish Office

Church Coordinator: Caroline Campbell
Email: stpeterschurch.lttm@gmail.com

712512

Churchwarden: Nila Spiller
Email: Nila.Spiller@gmail.com

716388

Churchwarden: Joy Moore
Email: contactjoymoore@aol.com

713552

Stepping Stones for little ones: Sarah Ching

07958 678771

Xplore (for school age children): Helen Kemp

714068

Church Flowers: Elizabeth Stoughton-Harris

717026

Road Stewards: Jean Scott

714150

Bell Ringing: David Bell

712970

Email: dbell1141@btinternet.com

St Peter's Hall Bookings: Pat Davies

716487

Email: stphlimpsfield@gmail.com

Parish News: Ian Tolley

07711 926856

Email: petersnews@littm.org.uk

The Parish Office at the Rectory is open on Tuesday to Thursday from 09:00am-5:00pm. The office can be reached on 01883 712512 or e-mail via: stpeterschurch.lttm@gmail.com

Address: St Peter's Church Parish Office, High Street, Limpsfield, RH8 0DG

CHURCH NEWS

SUNDAY SERVICES

St Peter's has a regular pattern of Sunday morning worship: a quiet **8am Holy Communion service** and a main **10am Parish Eucharist**. On the first Sunday of the month there is a shorter, more informal **All Age Family service at 10am**. Everyone is always welcome.

LIVE STREAM

The 10am service is live streamed on the St Peter's YouTube channel every Sunday except the first Sunday of the month. Visit YouTube and search 'St Peter's Limpsfield' or find details at www.stpeterslimpsfield.org.

MESSY CHURCH

On **Sunday 19 March**, children are invited to come and enjoy some morning crafts during the 10am service for Mothering Sunday. At this service posies of flowers will also be distributed to everyone who attends.

LENT LUNCHES

St Peter's will be holding three Lent Lunches on **Thursday the 9, 16 and 30 March**. These are to be held in the Millennium Room and follow the format of a short talk by Rev Helen followed by a light soup lunch. Arrive at 12.30pm for the short talk followed by lunch at 1pm. Everyone is welcome to just turn up, no need to book.

EASTER LILIES

If you would like to contribute a lily (£2.50) in memory of a loved one to help decorate St Peter's at Easter, please put your name and contact number, and the name of the person (s) to be remembered on the list at the back of the Church, or to Caroline in the Parish Office - 01883 712512 or Elizabeth Stoughton-Harris - 01883 717026. These names will be on the Altar throughout Easter week.



Save The Date!

Sunday 7 May 2023

Come to the Glebe Meadow for Limpsfield's



CORONATION PICNIC LUNCH

Starting at 12.30pm

Please bring your own food and drink. Some chairs and tables will be provided but if you can please bring your own. There will be a magician and balloon modeller and entertainment for children. More details coming soon. Please check www.stpeterslimpsfield.org for details nearer the day (may move to St Peter's Hall if the weather is wet).

Limpsfield Fete, Saturday 1 July

Save the date because the Limpsfield Fete is returning after a long absence due to covid restrictions. Once again it will be organised jointly by St Peter's Church and Limpsfield Infant School.

12noon-4pm
The Glebe Meadow

Tombola, BBQ, Dog Show, Raffle, Dancing Display, Stalls, Games, Refreshments and much more.

For details contact Joy Moore: contactjoy-moore@aol.com
mobile: 07867 978210



FAMILY SERVICES THIS SPRING

MESSY CHURCH

THIRD SUNDAY OF EVERY MONTH, 3PM

Crafts, activities, stories, song, tea and cake.



Sunday 19 March

Join us on Mothering Sunday

10am service with Merry Church crafts - in a change to our usual afternoon slot, Merry Church will

take place during the morning service.

Children are invited to come and make a gift for mums / grandparents / carers to take home with a posie of flowers.

Future Merry Church dates

Sunday 16 April, 3pm

Sunday 21 May, 3pm

ALL AGE SERVICE

FIRST SUNDAY OF EVERY MONTH, 10AM

A short, informal service where families are especially welcome.

CHURCH DIARY: MAR 2023 - JUNE 2023

The church is open every day during daylight hours.



Date	Services Mar-June
Fri 3 Mar	7.30pm World Day of Prayer Service
Sun 5 March	SECOND SUNDAY OF LENT 8am HOLY COMMUNION 10am ALL AGE SERVICE WITH BAPTISM
Wed 8 March	11am COFFEE MORNING in the Millennium Room
Sun 12 March	THIRD SUNDAY OF LENT 8am HOLY COMMUNION 10am PARISH EUCHARIST *
Wed 15 March	11am COFFEE MORNING in the Millennium Room
Sun 19 March	MOTHERING SUNDAY 8am HOLY COMMUNION 10am PARISH EUCHARIST with MESSY CHURCH *
Wed 22 March	11am COFFEE MORNING in the Millennium Room
Sun 26 March	FIFTH SUNDAY OF LENT (PASSION SUNDAY) 8am HOLY COMMUNION 10am PARISH EUCHARIST *
Wed 29 March	11am MUSICAL MEMORIES in the Millennium Room

Date	Services Mar-June
Thurs 30 March	10am LIMPSFIELD INFANT SCHOOL Easter Service
Sun 2 April	PALM SUNDAY 8am HOLY COMMUNION 10am Meet in The Bull car park for the Blessing of Palms and Procession down the High Street 10.15am ALL AGE SERVICE *
	HOLY WEEK
Wed 5 April	11am COFFEE MORNING in the Millennium Room
Thurs 6 April	MAUNDY THURSDAY 8pm EUCHARIST with the receiving of the oils, commemoration of the Last Supper, symbolic washing of feet and keeping watch
Fri 7 April	GOOD FRIDAY 12pm Churches Together Walk of Witness in Oxted (meet at 11.50am by the Council Offices) 2pm LITURGY OF GOOD FRIDAY with an opportunity to lay a nail at the foot of the cross
Sun 9 April	EASTER DAY 8am HOLY COMMUNION 10am FESTIVAL EUCHARIST * Bring a flower to put in our Easter cross

Date	Services Mar-June
Wed 12 April	11am COFFEE MORNING in the Millennium Room
Sun 16 April	SECOND SUNDAY OF EASTER 8am HOLY COMMUNION 10am PARISH EUCHARIST * 3pm MESSY CHURCH
Wed 19 April	11am COFFEE MORNING in the Millennium Room
Sun 23 April	THIRD SUNDAY OF EASTER 8am HOLY COMMUNION 10am PARISH EUCHARIST *
Wed 26 April	11am MUSICAL MEMORIES in the Millennium Room
Sun 30 April	FOURTH SUNDAY OF EASTER 8am HOLY COMMUNION 10am ALL AGE SERVICE
Wed 3 May	11am COFFEE MORNING in the Millennium Room 7.30pm ANNUAL PAROCHIAL CHURCH MEETING in St Peter's with elections, followed by refreshments - everyone welcome.
Sun 7 May	FIFTH SUNDAY OF EASTER 8am HOLY COMMUNION 10am ALL AGE SERVICE 12pm CORONATION PICNIC on the Glebe Meadow

Date	Services Mar-June
Wed 10 May	11am COFFEE MORNING in the Millennium Room
Sun 14 May	SIXTH SUNDAY OF EASTER 8am HOLY COMMUNION 10am PARISH EUCHARIST *
Wed 17 May	11am COFFEE MORNING in the Millennium Room
Thurs 18 May	ASCENSION DAY 6am OPEN AIR EUCHARIST at St Mary's Tatsfield followed by breakfast in the Hall
Sat 20 May	10am The Big Paint in St Peter's Hall
Sun 21 May	SEVENTH SUNDAY OF EASTER 8am HOLY COMMUNION 10am PARISH EUCHARIST * 3pm MESSY CHURCH
Wed 24 May	11am COFFEE MORNING in the Millennium Room
Sun 28 May	PENTECOST - celebrating the gift of the Holy Spirit and the beginning of the church 8am HOLY COMMUNION 10am FESTIVAL EUCHARIST *
Wed 31 May	11am MUSICAL MEMORIES in the Millennium Room

Friends of St Peter's

St Peter's Church has served the Limpsfield community, locally and beyond, and been part of its heritage for centuries. The first record of a church in Limpsfield is in the Domesday Book in 1086, with the oldest part of the present church (the south aisle and tower) thought to have been built around 1180. In 2023, over ten centuries on, St Peter's has launched the 'Friends of St Peter's' to help preserve the future of this much-loved historic building in Limpsfield for generations to come.

As a church we strive to reach all generations, from the many young families who join us for our All Age and Messy Church services, to old and young who enjoy our Parish Eucharist and early morning service of Holy Communion.



Throughout the year we have many special services, including Easter Day, Remembrance Sunday, All Souls and Nine Lessons and Carols and these attract many people from our wider community. We also hold many services of baptism, wedding and funerals.

All of this is done within a church which has stood as a beacon of Christ's presence in the village for nearly 850 years. Previous generations have made huge efforts to ensure that our beautiful Grade 1 listed church has been maintained for us today.

The Friends of St Peter's has been set up to help share in the task of handing it on to our children in as good, if not better, condition that we received it and thereby ensure that it can remain open and continue to be part of village life for future generations.

By becoming a Friend you can help ensure this happens. All the money raised is used exclusively for the fabric of St Peter's Church. None of it will go into general funds for the Diocese as a whole.

Leaflets with an application form have been delivered to households in the parish. If you did not receive one and

would like to become a Friend then simply contact the Parish Office for a membership form. You may make a monthly, quarterly or annual payment. Thank you for whatever you are able to contribute.

The Parish Office
 stpeterschurch.ltm@gmail.com
 01883 712512

Parish Review

Christmas came with a flurry, as it always does. This was the first year since the pandemic began that we were able to hold some of our special services in person. Winter colds and viruses were still rife a week before Christmas, so we really had no idea what to expect in terms of numbers. But lots did turn out and it was lovely to see and greet some familiar and new faces at our festive family services.

A particular highlight for us was our Community Carols. We'd already had a good turn out the week prior for our main Nine Lessons and Carols, our more traditional candlelit service. However, this was the first year Rev Helen had decided to put on a second Carol Service, a more informal, earlier service aimed at children and families. After an appeal for jam jars to the congregation, we received close to 150!





Musical Memories - Limpsfield

Designed for anyone who enjoys a sing a long, including those with dementia and their carers. All welcome. You can be assured of a warm welcome, plenty of singing, company, cake and refreshments.

**Last Wednesday of the month, from 11am
in St Peter's Church, Millennium Room**

2023 dates

25 January 22 February 29 March 26 April 31 May
28 June 26 July 30 August 27 September 25 October
29 November 20 December

£1 per person, Refreshments provided

Lifts available! Contact the Parish Office to enquire:

01883 712512 | stpeterschurch.lttm@gmail.com

Filled with dainty fairy lights bought online, some hand-held lanterns were made. The church was set up and we waited by the door, still dark as it was mid-December and nearing 5pm. Sure enough a steady trickle of children started appearing with their parents walking up the path. Each family were handed a lantern on their way in. All our lanterns were used that day which shows how many turned up, and what a lovely service it was. Carols were led by some of the children up on the chancel step and mulled wine and mince pies were served after the service. We will definitely be doing another community carol service this year.

Two days later on Christmas Eve, even more families turned out in droves to

our two All Age Christingle/Crib services.

In fact, well over 400 people turned out to our two afternoon services that day. So thank you to all who came and celebrated with us last year, whatever service you were at.

Caroline Campbell

PARISH REGISTER

FUNERALS & THANKSGIVING SERVICES

11 January Funeral of John Cox
30 January Funeral of Liz Dobson
16 February Funeral of Sarah Sutherland



Changing Times at St Barnabas

It was once written that all times are times of transition. Sometimes the pace of change is very slow, and at others almost has lightning speed. Nonetheless, it is always present. Nothing stays the same forever, whether we would like it to or not.

The past 18 months at the College of St Barnabas have been a time of quite rapid change in some areas, that very rapidity perhaps emphasised by the stasis of the lockdown slowdown imposed by Covid-19. In other areas, change has been slower and more subtle, moving at a gentler pace. The results so far of this change is that St. Barnabas has emerged from the pandemic with a new structure, a new vision and a more ecumenical approach.

The structural change is a move

away from the old system of Bursar and live-in Warden. Instead, we have a Chief Executive Officer, Mr Monty Erskine who comes to us from All Souls, Langham Place where he was Director of Charities, and a Chaplain, The Revd Derek Chandler who previously served as a Parish Priest in Berkshire. Derek works full-time but does not live on site. When he is not available, he is ably supported by a Chaplaincy Team of volunteers. There have also been some changes to roles and functions within the wider management team to facilitate

working in furtherance of the vision.

That new vision for St. Barnabas was developed during the dark days of the pandemic and is the result of much discussion and deliberation. Essentially, it has been refined into 4 key areas vital to the College's future development and enhancement, namely maintaining our founder's original concept of a safe place for people in need, the need for maximising capacity in a heritage environment, achieving environmental sustainability, and the growing need to provide a more articulated range of services including the option of domiciliary care support for our more independent residents as their needs grow over time. Each of these areas require a great deal of work and senior staff have been organised into various teams to develop and deliver the activities that will move us closer towards achieving the vision. It is heartening that we are already making progress, and gaining momentum after the lost years of Covid-19.

In what is described recently by St. Barnabas' Chairman, The Revd David Williams, as "*a significant ecumenical development*" the opportunity to live at the College is being extended to include Christians of all denominations. Nevertheless, St. Barnabas remains Church of England with regular Anglican worship and a full-time Anglican

Chaplain, and preserves its priority of accommodating Anglican clergy, missionaries and lay workers and their spouses.

You can rest assured, however, that one thing hasn't changed, and it is fundamental to our founder's original vision back in the 1890s for helping those in need: no eligible resident is declined for want of means. We were founded to help people in need, and the need for the help we provide is still there.

As we don't have a huge endowment fund or massive popular appeal that means we need to run a significant fundraising operation all year round to meet the costs involved and that every year is a substantial challenge. This year, for example, we need to raise about £325,000 to bridge this care gap, and may need to raise more for specific projects.

So that is something else that hasn't changed and which, given the nature of our charity, is unlikely to change: the need to rely on the kindness, care and compassion of like-minded people for support for our work.

There are several ways in which you can help St. Barnabas care for elderly and vulnerable Christians. If you are interested in finding out more, please send an email to mike.herbert@collegeofstbarnabas.com

Arnold Bennett was born on 27 May 1867 in Hanley in the Staffordshire Potteries. From there he grew to become the most financially successful author of the early 20th Century. He wrote novels - particularly "Anna of the Five Towns" (1902), "The Old Wives' Tale" (1908), "Clayhanger" (1910) and "Riceyman Steps" (1923) but also plays and films. After his death his fiction became neglected after being ridiculed by fellow writers - who were possibly somewhat envious of his success.

He was also an early writer of self-help books and this is from "How to Live on Twenty-four Hours a Day" which was first published in 1907. One of our editorial team was given this many years ago and has carried it around in his wallet ever since.

Philosophers have explained space. They have not explained time. It is the inexplicable raw material of everything. With it, all is possible; without it, nothing. The supply of time is truly a daily miracle, an affair genuinely astonishing when one examines it. You wake up in the morning, and lo! your purse is magically filled with twenty-four hours of the unmanufactured tissue of the universe of your life! It is yours. It is the most precious of possessions. A highly singular commodity, showered upon you in a manner as singular as the commodity itself!

For remark! No one can take it from you. It is unstealable. And no one receives either more or less than you receive.

Talk about an ideal democracy! In the realm of time there is no aristocracy of wealth, and no aristocracy of intellect. Genius is never rewarded by even an extra



hour a day. And there is no punishment. Waste your infinitely precious commodity as much as you will, and the supply will never be withheld from you. No mysterious power will say:—"This man is a fool, if not a knave. He does not deserve time; he shall be cut off at the meter." It is more certain than consols, and payment of income is not affected by Sundays. Moreover, you cannot draw on the future. Impossible to get into debt! You can only waste the passing moment. You cannot waste to-morrow; it is kept for you. You cannot waste the next hour; it is kept for you.

I said the affair was a miracle. Is it not?

You have to live on this twenty-four hours of daily time. Out of it you have to spin health, pleasure, money, content, respect, and the evolution of your immortal soul. Its right use, its most effective use, is a matter of the highest urgency and of the most thrilling actuality. All depends on that.

Arnold Bennett

THE INTERVIEW:

Chris Brewer



Chris has been very much at the heart of Limpsfield life for almost 50 years. In that time he has achieved a lot - not least playing a significant role in the establishment of this magazine. The interview below was originally published in Chart News (see details below) and, at the risk of further embarrassing him, we wanted a chance to make sure his contribution was recognised at this end of the village too.

The YMCA or 'Young Men's Christian Association' is one of those charities with whose name we are all familiar but are maybe not sure what exactly it does. It was founded in 1860, a product of the twin imperatives of Victorian Christianity and social responsibility, but it could be said now that it is neither young nor exclusively male, Christian only in ethos, and not even an association. Nevertheless, its sense of social responsibility is as great as ever.

YMCA East Surrey, based in Redhill, is one of many around the country but its 130 employees, and many voluntary helpers, carry out an astonishing range of services to the local community including childcare and family services, emotional wellbeing, supported accommodation, and disability services. In 2020, for instance, among other initiatives, they provided 18,000 nights of accommodation for vulnerable young people, 10,000 hours of short break care to young people with disabilities and raised over £100,000 from sponsored challenges to supplement the grants received from charities and local and central government.

It is also the charity with which Chris Brewer has been associated for most of his adult life and for which he has recently been honoured with the MBE for services to YMCA East Surrey as Trustee, Chairman and now Patron.



In October 2019 Chris received the order of the red triangle upon standing down as Chairman of YMCA East Surrey. This recognizes long and meritorious service, outstanding contributions and achievement in the community.

Chris Brewer came to live on the Chart in 1975, with Priscilla, settling in Ballard's Lane. He was born in Reigate in 1936 and has many memories of wartime years, including the Battle of Britain overhead and Canadian tank regiments stationed there. After boarding at Charterhouse, he did his national service in the RAF, mainly in Singapore during the Malayan Emergency of the 1950s, and then went into the family paint firm which bears his name.

'Brewers' has a long and distinguished history, beginning in Eastbourne in 1904 when his grandfather opened the first store, selling mainly wallpapers. Paint was not then sold ready-mixed, its use mainly for windows and doors, and not until the 1920s did ready-mixed paints begin to grow in popularity. By this time Chris's father had moved to East Surrey to re-open a store in Redhill after the First World War and settled in Seale Hill, Reigate, where he was a champion tennis player and became a trustee of the YMCA, helping it to buy premises in Reigate. In 1945 Brewers had seven branches around the south-east but expanded in the post-war rebuilding boom and now has nearly 200 stores, the furthest north at Alnwick in Northumberland. The paints were originally produced by Imperial Chemical Industries (ICI) at Slough, and 55 other British manufacturers,

but Chris sadly reflects that whereas in 1945 there were about 600 paint and varnish manufacturers in Britain, now there are very few British-owned. It is a business still controlled by the wider Brewer family, Chris himself becoming Chairman in 1993 until he retired in 2004 and his two sons, Simon and Charles, are respectively Chief Executive and Chief Financial Officer of the company today.

Chris plays golf at Tandridge and sings in the choir at St. Peter's, encouraged to do so by his prep school friend, Ronald Bawtree, former head of Hazelwood. He was also appointed as a Deputy Lieutenant in Surrey between 2006 and 2011. His most compelling and fulfilling work, however, is running his own family's charitable trust, which has given large support to YMCA East Surrey and contributed significant funds and assistance to charitable work in Britain, Africa and Ukraine. The biggest de-

cision for the YMCA East Surrey, of which Chris was then in the 1980s himself a trustee, was the purchase of a new site at the former Royal Earlswood Hospital where the Sports and Community Centre is now based and from which most of the services are provided. The family trust has also supported Disability Challengers, a Guildford charity providing short break respite care for disabled children, a template which has been taken to African countries like Gambia and Kenya, and similarly supported. The Ukraine venture arose through contact with a paediatrician in Chernyhiv to help children disabled by the Chernobyl radiation fall-out, and this continues despite the ongoing conflict. Chris visited Chernyhiv each year before the pandemic and this commitment to Ukraine has absorbed over the past few years much of his time.

From its humble beginnings in Eastbourne, 'Brewers' has become a familiar name in many towns, providing Chris and his family with the wherewithal to satisfy those urges of philanthropy and social responsibility which characterised the Victorian age, and which first led his father in 1910 to support the YMCA after staying at one of their holiday camps above Beachy Head. YMCA has become more familiar to a younger generation in the words of the 1970s song by *Village People*. Chris may or may not have been belting out its chorus line in that decade and beyond, but he has certainly followed its lyrics in his own life: *'Young man, there's a place you can go...it's fun to stay at the YMCA'*.

David Walsh

First printed in **Chart News**
Autumn 2022
<https://chartnews.org>



New additions At the Orchard

New faces and fresh voices led the torch-lit procession from Limpsfield's Royal British Legion to the Community Orchard to celebrate the January Winter Wassail.

We enjoyed much that was familiar, including the vigorous accompaniment of The North Downs Drummers and the beckoning glow of the bonfire as we progressed through the woodland towards the King Tree, but what brought new excitement this year was the presence of two new Wassail Masters and a new leadership team for the year-round work of nurturing the orchard. And the whole Wassail project was masterminded for the first time by orchard volunteer, Carolle Stent with support from several old hands, including Rosemary Buchan, Peter Jarvis, Peter Tindall and John Kempton.

Outgoing Chair, Helen Ellson is still very much a presence - great for us volunteers - but after so many years of hard work she has been able to hand over the role of Chair to Will Turner. Originally a farmer's son from Buckinghamshire,



Bonfire's burning! [photo credit: Bob Matthews]



North Downs Drummers
photo credit: Roger Stent]

Will is a passionate conservationist, countryside steward, engineer and apple lover! *'I'm hugely excited to be taking over from Helen Ellson ... and will endeavour to continue (her) brilliant work and dedication to the community over the past 13 years.'*

Will is joined on the Committee by Barbara Forrest, retired accountant and now Treasurer, and Helen Dixon as Secretary. Both Barbara and Helen cherish apple trees of their own, Barbara on her allotment as well as in her garden. When Helen moved into Limpsfield 18 months ago, she discovered in her new garden an apple tree that is at least 120 years old!

Our two new Wassail Masters, Stephen Rapoport and James Reeves, both young Dads with busy working lives, talk here about taking on the role. I wondered how their friends and business colleagues have reacted:

Stephen: *'The overriding reaction is intrigue! I think they may jump to conclusions about a bunch of hippies drumming in a field and hugging trees (some of which are accurate!) but when they heard more details about the event many came along! It's such a rarity around this area to find such a*



quality event, full of happy families and free! Well, donations are always welcome.'

James: *'Most haven't heard of wassail before, and when I describe it I can tell they're still not sure what to make of it. And early January is a funny, almost lost time when people are still on holiday or readjusting to the new year. But for me that's an oddly integral part of what creates the unique atmosphere of our wassail festival. You only understand the magic when you're there.'*



Helen Ellson with our two new Wassail Masters
left James Reeves, right Stephen Rapoport [photo credit: Bob Matthews]



The Limpsfield Community Orchard's funding comes mainly from the annual £10 donation made by the Friends of the Orchard. It is run entirely by volunteers. To learn more and to get involved visit: <http://orchardlimpsfield.blogspot.co.uk/>
Look out for the annual blossom viewing, a glorious occasion during April/ May.

Check the blog for detail and timings!

The Barn Theatre



Sat 11th March 7.45pm	Randy and the Rockets <i>Get Randy at the Barn and join us for a roof raising evening of music and entertainment with Oxted favourites</i>	Tickets: £20.00 from www.barntheatreoxted.co.uk
Sat 18th March 7:30pm	An Evening of Choral Fun - Croydon Male Voice Choir <i>Croydon Male Voice Choir sings a scintillating selection of choral classics, old and new</i>	Tickets: £15.00 from www.barntheatreoxted.co.uk
Sun 26th March 7.00pm	Monkey and the Guv - On Broadway <i>International performers Stuart Matthew Price and Heather Lundstedt Price bring you the best musicals The West End and Broadway have to offer!</i>	Tickets: £22.00 from www.barntheatreoxted.co.uk
Mon 27th March 7.45pm	A Night of Australian Country and Folk Music - The Oxted Sessions <i>A wonderful night of songs and stories from Alan Fletcher and Lachlan Bryan and The Wildes</i>	Tickets: £16.50 from www.barntheatreoxted.co.uk
Sat 1st April 2.00pm and 7:30pm	Goodnight Mister Tom - Fables Theatre Company <i>A musical version of Michelle Magorian's award-winning book, performed by the wonderfully talented children of Fables Theatre Company</i>	Tickets: Adult £14.00, Under 16's: £10.00, Family (2 adults and 2 under 16's): £45.00) available from www.barntheatreoxted.co.uk
Wed 19th - Sat 22nd April 2.30pm (Sat) & 7.45pm	Is There Life After High School? - Oxted Musical Theatre Company <i>A musical show of songs and monologues recalling the joys, terrors, envies, hates, and loves that most teenagers experienced at high school</i>	Tickets: £18.00 from 07859 499667 or www.barntheatreoxted.co.uk

Information pertaining to all the above shows can be obtained from:
www.barntheatreoxted.co.uk or 15a High Street, Westerham. Kent. TN16 1RA. 01959 561811

The Sands of Time:

A Cottage in Limpsfield from 1450 to the Present

Date

April 14, 2023 7:30 pm – 9:00 pm

Venue

Westerham Hall

The village of Limpsfield has long been appreciated for its wealth of historic domestic architecture. However, the identities of the people who owned and lived in its houses before the twentieth century have been largely untraced. The speaker, Nicholas Dixon, will explain how he reconstructed the history of one Limpsfield cottage and the land on which it was built, resulting in a revised understanding of its actual age and the discovery of fascinating information about its owners and residents. The story of one seemingly insignificant cottage gives remarkable insights into the history of the Limpsfield and Westerham area from the medieval era to the present day and demonstrates the potential of archival research to shed light on historic houses in Britain more generally.

Dr Nicholas Dixon is a professional genealogist and house history researcher in London. He studied History at the universities of Oxford and Cambridge, and was awarded a PhD for a thesis concerning the history of the Church of England in the nineteenth century. He is an external contributor to the History of Parliament project and conducts research projects for clients.

More information:

T: 01959 569600

E: chairman@westerhamsociety.org.uk

<http://www.westerhamsociety.org.uk/>



Friends of Limpsfield Common



Two Years On

Back in September 2020 the Covid Pandemic was having a vast impact on the whole country. Countryside areas were inundated with visitors, and that included Limpsfield Common. The Friends of Limpsfield Common decided to undertake a survey asking questions to the visitors of Limpsfield Common and also seeing who was coming.



We had a great response! In fact 376 responses representing over 1,000 people of which 98.9% were all local people living in RH8.

SUMMARY OF KEY FINDINGS

- * Limpsfield Common is a local amenity, that is highly regarded, appreciated and well used. 90% of responders live in RH8.
- * Walking (79%) and Enjoying Nature (65%) are the most common ways visitors spend their time on the Common.
- * Reflecting the proximity of their home, 37% visit 'a few times each week', whilst 20% visit daily. This means that over 50% of visitors have a



strong association with the Common, likely to have feelings of 'ownership' or 'care'.

- * The question '*What do people like about the Common?*', reflects how responders spend their time on the Common (Q1). 70% of responders like the 'Natural Environment' (flora, fauna, nature, trees, woodland) and the ease of access/proximity the Common has to their homes.
- * Exercise, (walking in particular, but including dog walking and all other forms of exercise) scores highly.

• What can be improved on the Common?

This section provided a wide variety of comments.

- * Signage to aid and improve visiting the Common (to support direction finding, trails, maps) and information (nature, history, emergency contact) received 19% of improvement suggestions.
- * Clearly Littering 8.5% and Dog Poo Mess (11%) are a concern, making 19.5% together. Responders suggest ensuring we clearly ask visitors to take dog poo and

litter home with them, as well as installing more dog poo bins and litter bins.

- ✱ Parking, Management of the Common, Natural Play were all topics that provoked much comment.

WHAT HAPPENED NEXT?

Together with the National Trust, Tandridge Council, Limpsfield Parish Council, the local Task Force, Chart Fair and Oxted Rotary, The Friends of Limpsfield Common have worked hard to respond to the survey.

- ✱ By the end of 2022 every car park has had a dog poo bin and litter bin. We ask all visitors to take their litter and dog poo home.
- ✱ Bird and bat boxes are going up
- ✱ High Chart car park has been revamped
- ✱ A new Family Activity Trail launched on 4th September 2022. Here is the link: <https://limpsfield.org/friends-of-limpsfield-common-family-activity-trail/>
- ✱ A new Easy Access trail is underway
- ✱ New information boards and updated panels will be inserted in every car park

- ✱ And new waymarks will be placed within the Commons throughout 2023.

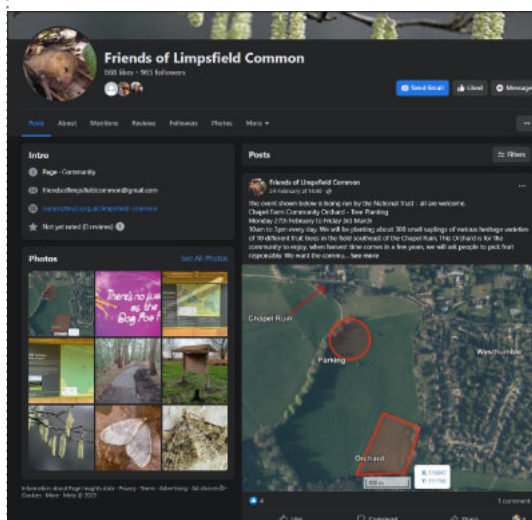
We still have lots to do !

But working together with all our local partners and supporters means we will continue to fulfil the wishes of the local community. To become a Member of the Friends of Limpsfield Common please contact **friendsoflimpsfieldcommon@gmail.com**

Or complete our online membership form: <https://form.jotform.com/202643003650341>

Visit our Facebook page: www.facebook.com/folimpsfieldcommon

Maggie Morgan Clist



Tandridge District Council

Share your views on your local area

Residents are invited to share their thoughts on proposed new ward boundaries as part of a review of electoral arrangements in the Tandridge district.

The Local Government Boundary Commission for England (LGBCE) is reviewing the boundaries in the Tandridge district and wants residents' views on a number of issues to make sure:

- ➡ Residents can easily understand electoral arrangements which reflect their local communities.
- ➡ Each of our 42 councillors represent approximately the same number of residents.
- ➡ Ward arrangements help us to continue to work effectively for our residents.

The LGBCE will use residents' views to help draw up its initial proposals for new ward boundaries, which it will consult on later this year.

Residents have until **Monday 20 March 2023** to submit their views, which can be done online (at <http://www.consultation.lgbce.org.uk/have-your-say/38728?>), by e-mailing reviews@lgbce.org.uk or by writing to: **Review Officer (Tandridge), LGBCE, PO Box 133, Blyth, NE24 9FE.** More information: <https://www.lgbce.org.uk/all-reviews/south-east/surrey/tandridge>.

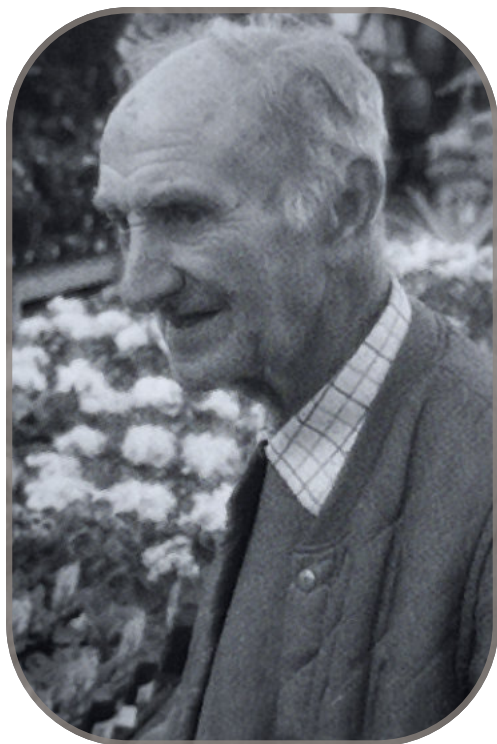


Thank you Brian Knight

In the autumn of 2022 the Oxted, Limpsfield and Godstone area lost a much-loved friend with the death of Brian Knight of Knight's Garden Centres.

We understand that Brian started his gardening career at the age of 14, by "digging for victory" when he left school during World War II and was too young to be called up or sent down the mines.

Well into his 80s he was still a familiar figure working more or less full-time in his beloved Nag's Hall branch, and even after the Covid lock-down he was often to be seen seated in the entrance hall to greet his customers.



On his funeral order of service his family wrote that "*he considered it a blessing to be tending plants*". Whether he really did remember us all I don't know, but he always treated us all like personal friends and he will be greatly missed by local gardeners and remembered with huge affection.

Marianne Bell



Have you got Voter ID?

If you want to vote in a polling station at the local elections on Thursday 4 May, you'll need to bring photo ID with you, otherwise you won't be able to vote. This is a new requirement following changes to the law.

Your ID needs to be the original and not a photocopy and can be:

- A passport.
- A driving licence (including provisional licence).
- Blue Badge.
- Identity card with PASS mark (Proof of Age Standards Scheme).
- Certain concessionary travel cards.
- Biometric immigration document.
- Defence identity card.
- National identity card.

If you have one of these IDs, but it is out of date, you can still use it to vote at a polling station if the photo on it still looks like you. You don't need to provide photo ID to vote by post.

If you don't have any of these items you will need to apply for a free Voter Authority Certificate (from <https://www.electoralcommission.org.uk/i-am-a/voter/voter-id/applying-a-voter-authority-certificate>) by 5pm on Tuesday 25 April.

You can find out more at <https://www.electoralcommission.org.uk/i-am-a/voter/voter-id> about the Voter ID requirements, or call **0800 328 0280**.

For more information on other ways to vote, such as by post or by proxy, please visit the Electoral Commission website.



There was definitely an excited buzz in the air as children skipped into school to start the spring term. The prospect of new and stimulating learning adventures, longer days and spring weather is always cause for excitement - let's just hope the weather gets this message too!

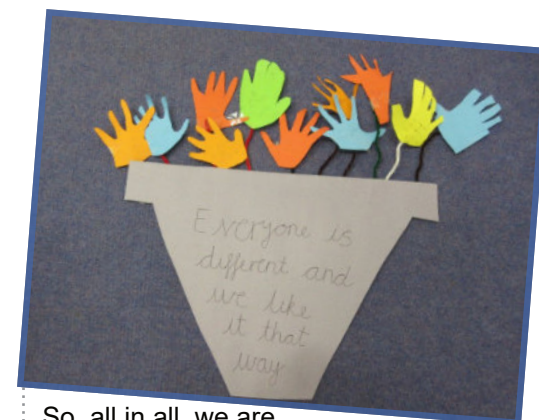
Already this term the children have been introduced back to Forest School, giving them the opportunity to explore their fabulous surroundings. What better way for our children to flourish than by having the chance to investigate and use the wonderful world that God has created around them. To be inspired and to have those 'wow' moments: 'Awe and Wonder'.

At Limpsfield we believe this magical feeling should be fostered and actively promoted throughout the curriculum for all children and adults. The world around us is such a very special place and as a Christian school we believe that God's creation is something to be explored and celebrated at every opportunity. We are extremely privileged to be able to play an active role in the spiritual development of our pupils and encourage reflection, enquiry and a sense of 'something other'.

Already our Year 1 children have taken part in a Quest for Neil Armstrong experience. The children explored the life and times of the American hero. They met a young Neil Armstrong, launched into space in Apollo 11 and then splashed down in the Pacific as they travelled home from the moon, unearthing many a moon landing fact along the way.

Children from our Faith Group have also had the opportunity to collaborate with members of the Nutfield primary school and St Peter's infant school Faith groups to share their experiences and explore the meaning of Equality, diversity and inclusivity as shown through Bible stories and a variety of interactive activities. The children had the most fantastic time exploring St Peter's CofE Infant School, finding out and discussing what makes a distinctive church school. They then went on

to study each other and used mirrors to draw pictures of themselves and their partners, examining the idea that we can all see each other slightly differently, but in the eyes of God and each other, we are all very special, unique, and different in our own right; and therefore we all deserve to be treated equally and fairly. The day ended with the children then creating a lovely diversity flower made from their hands with lovely written comments on. We made three of these flowers so all the children could take one back to their own schools.



So, all in all, we are absolutely springing into the spring term.

With our very best wishes
Lenia Greenaway
and the Limpsfield school team.



Oxsted & Limpsfield
Music Society

75th
Anniversary
Season

Three great concerts April - June
Beethoven, Bach, Mendelssohn, Schubert, Bartók and more

15 APRIL



Solem
String Quartet

20 MAY



Ignas Maknickas
piano

17 JUNE



Guy Johnston
cello

BAWTREE CONCERT HALL, HAZELWOOD SCHOOL

TICKETS £30 / FREE FOR UNDER-25s

BUY VIA WEBSITE OR ON THE DOOR - CONCERTS START AT 7.30 PM

www.olms.org.uk





Merton Priory & Nonsuch Palace: How a Great Building Led to Another

John Hawks, Vice-Chairman of the Merton Priory Trust and Trustee of the Wandle Industrial Museum, gave an illustrated lecture to the Oxted & District History Society on '*Merton Priory & Nonsuch Palace: How a Great Building Led to Another*'.



Both buildings were in Merton, near to the present A24. Merton Priory, an Augustinian Foundation, was built in the village of Merton from 1114 onwards. It served as a guest house and hospital and was much visited by medieval kings. Attended by Thomas a Beckett and Stephen Langton, there are no illustrations of the Priory, demolished at the Dissolution in 1538.

Thomas Cromwell, immediately started building Nonsuch Palace nearby for Henry VIII, using Priory fabric, not however completed until after Henry's death. It was not

used by Edward VI or Mary I, who sold it to the Earl of Arundel and Elizabeth I loved to visit. It was eventually sold back to the Crown to pay off the Arundel debts and became very dilapidated. Charles II gave it to Barbara Villiers but it continued to decline and was eventually demolished. The Merton Priory Trust is established and the Priory foundations excavated, now in the basement of a large Sainsburys with a museum to attract visiting groups and schools.

The last meeting of this season is on 14th March when Bob Evans will talk on "Ann of Cleves: Flanders Mare or Bletchingley Beloved?" followed by the Annual General Meeting.

Stuart Paterson

Tandridge Handicraft Society

Tandridge Handicraft Society are hosting an exhibition with items for sale

From **23rd to 25th March 2023** the Tandridge Handicraft Society is hosting a display of work. It will be open daily from 10am to 4pm at the United Reformed Church, Bluehouse Lane Oxted RH8 0AA.

The Society meet every Monday at the Woodhouse Centre, Hoskins Road car park, opposite Tandridge Leisure Centre, Oxted RH8 9HT postcode for SatNav RH8 9JQ). Come and join us, we are always keen to welcome new members with similar interests.

Further details on our website www.tandridgehandicraftsociety.org.uk or contact Jenny Beal on **01883 620730**

Remaining Programme for 2022/23

Spring/Summer Term 2023:

Monday 9 January to Monday 31 July

15 May: *Working In Series: Talk by Kate Findlay on applique, print and paint*

12 June: *Nettles Still Got The Edge: Talk by Brigitte Kaltenbacher on harvesting, preparing and weaving nettle fibres*

31 July: *End of Term & Display Of Work*

See our website for the latest on workshops and talks.

40th Anniversary Walking Festival



East Surrey Walkers will be celebrating their 40th Anniversary by means of a festival between 22nd and 30th April. During that period we are arranging walks on each day. On certain days there will be several options. Details will be published on our website in the near future. Please do join us to help us celebrate. To "warm up" you may wish to check our current walks programme and join a walk.

The lovely village of Bletchingley has a varied network of public footpaths which regularly feature in our walks. A number of these routes pass through the church yard at St. Mary the Virgin Church. The village and church have a valued connection with the late Archbishop Desmond Tutu.

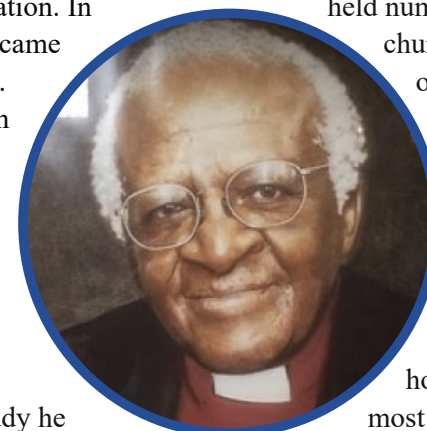
The Archbishop was a man of many talents. He was a theologian, author, orator and activists. He played a prominent part in the anti apartheid movement and worked for human rights in general. In all such activity

The Archbishop was a strident advocate of non violent protest.

Archbishop Tutu was born on 7th October 1931 in Klerksdorp, South Africa. His family were poor but in his own words "not destitute". He had two sisters and two brothers both brothers died in infancy. Tutu was sickly from birth and as a young boy he contracted polio which atrophied his right hand. Originally Methodists the family ultimately converted to the Anglican faith.

I cannot in such an article as this detail

the varied life and career of The Archbishop and will mention only one or two key events. The Archbishop received a good education. In early adulthood he became a teacher and married. He was ordained as an Anglican priest in 1960. In 1962 he moved to the United Kingdom to study theology at Kings College.



Post this period of study he returned to South Africa and in 1965 returned to the UK to take up an appointment as The Assistant Curate at St. Marys Church Bletchingley. The Archbishop, his wife and children lived in The Clerks House in the village and the children attended the local school.

The family remained in Bletchingley until 1966 when they returned to South Africa. A feature of Tutu's time in Bletchingley was his work to encourage cooperation between his Anglican parishioners and the local Roman Catholic and Methodist communities

Over the years Archbishop Tutu made a number of return visits to Bletchingley including in 1985 when he conducted the Harvest Festival service in St. Mary's. A portrait of the

Archbishop can be

During the following decades Tutu held numerous posts within the church and various organisations. Notably he was appointed to the post of Bishop of Johannesburg (1985 to 1986) and Cape Town (1986 – 1996) in both cases he was the first black man to hold the posts that are the most senior positions in southern Africa's Anglican hierarchy.

In 1984 Tutu was awarded the Nobel Peace Prize. He shared the US\$192,000 prize money with his family, SACC staff, and a scholarship fund for South Africans in exile.

Following his retirement in 1996 he featured in the South African truth and reconciliation hearings and continued his work for human rights.

Desmond Tutu died on 26th December 2021 having suffered ill health for some years.

East Surrey Walkers wish you Happy Walking,

Stephen Hanks

The Arts Society Limpsfield

John Peter Russell – The Last Impressionist

Lucrezia Walker, art specialist and lecturer, gave an illustrated lecture to The Arts Society Limpsfield on 'John Peter Russell – The Last Impressionist'. John Peter Russell was born in Sydney in 1858 to an industrial entrepreneur father and an artistic mother. In the 1870s he visited Tahiti and China and in 1876-79 was apprenticed to an engineering firm in England as his father was keen for him to join the family business. However John Peter Russell was keen to be an artist and after the death of his father in 1879 he studied at the Slade School in London from 1881-3 and then went to Paris, where he mixed with the other impressionists being particularly friendly with Rodin and Monet. Like the other impressionists he liked to paint street scenes and other outside scenes in the country.

Russell fell in love with the Italian model. Marianna Mattiocco whom he married and had 11 children. He built a family house in Brittany, where the family lived in summer and he loved boating, being visited for two summer holidays by Matisse. Unfortunately Marianna died from cancer, aged 42 in 1908. Russell was over-wrought and eventually returned to Sydney in 1922. He was very wealthy and did not need to sell his paintings, many of which he gave to the sitters or are in Australian galleries.

Details of the Society are on www.theartsocietylimpsfield.org.uk. Those interested in attending lectures should contact John Holmes on chair.limpsfield@theartssociety.org or the Membership Secretary on membership.limpsfield@theartssociety.org.



29 March 2023

Patricia Law

Emeralds – Romancing the Stone

Patricia Law, a popular speaker will give an illustrated talk on the story of Emerald production and how they are used in jewellery. This will be a popular lecture! Membership of The arts Society Limpsfield is available for £21, from March 1st.

18 April 2023 repeated 27 April 2023

Andrew Davies Walks

Explore Camden Town, Regents Canal and Primrose Hill on a guided walking tour with Andrew Davies. Members have priority booking for these popular walks.

26 April 2023

Ian Keable

The Ancient Art of Trickery

Early artists used the magician to symbolise the mysterious and the unknown, associating them with astrology and tarot cards whilst cartoonists and satirists delighted in linking politicians with skulduggery. This lecture will show how they were portrayed in art.

31 May 2023

Rupert Willoughby

The Battle of Marathon

'The Battle of Marathon' took place over two and a half thousand years ago. As an event in English history, it is more important than the Battle of Hastings. Rupert argues that Marathon was the battle that saved Western Civilisation.

28 June 2023

Anne Anderson

William Morris and Edward Burne-Jones

Morris and Burne-Jones collaborated on numerous projects including the Holy Grail tapestry cycle. Anne will take us through the life and art works of these two major influences.



LEARN, LAUGH, LIVE

Come and join us at Westerham U3A



Our Open Meeting takes place on the second Thursday of the month at 2.00pm at Westerham Village Hall, and the January talk was a delightful presentation by Pat Bryer on "*Women of a Certain Age*" told through comic verses and songs by writers such as Victoria Wood, Pam Ayres and Roald Dahl. It promised to be entertaining and it certainly was!!

In February Jennifer Godfrey told us about the stories and journeys of hope, determination, courage and sacrifice of those involved in the women's suffrage movement in Kent. Tea/coffee and cake and an opportunity to chat followed – all for just £2 a head.

You are also welcome to meet us at our monthly coffee morning, held on the first Wednesday of the month at 10.30am, also in Westerham Village Hall.

The annual membership is only £20 or £35 per couple and you can join one or more of our many and varied interest groups, or even start one of your own, as well as enjoying social events and outings. Have a look at our Facebook page and our website at www.westerhamu3a.org



BLETCHINGLEY BOWLING CLUB

Upcoming events

Bletchingley Big Bowls Day

Come and join us on 30th April between 10am and 4pm for our Big Bowls Day, a chance to have a go at Lawn Green Bowls in a relaxed and friendly environment.

Friday Night Bowls For Fun

Following on from the Big Bowls Day join us for 4 Friday nights of free bowls on 12th, 19th, 26th May and June 2nd from 7pm. Coaches will be on hand to give you some tips.

Family Fun Day

On June 4th we are holding a Family Fun Day with bowling for all ages plus lots of fun activities. Come along at anytime between 12-6pm. There will be also be a BBQ and our club bar will be open.

6 Reasons To Play Lawn Bowls

1. It's Sociable
2. It's Perfect For All Ages And Levels Of Physical Ability
3. It Gets You Out In The Fresh Air
4. It Can Help You To Relax
5. It's Good Exercise
6. It's Easy To Pick Up.

Bletchingley Bowling Club
Grange Meadow, Bletchingley
Redhill, RH1 4PE

(opposite "The Bletchingley Arms")



Happy 50th Anniversary *to the OLCS*



The Oxted and Limpsfield Choral Society (OLCS) kicks off its 50th anniversary year at Oxted United Reformed Church with a concert on Saturday 20th May 2023 promising “*A Musical Spring into Summer*”. Full details will be available via their website at <https://olcs.org.uk/>.

The OLCS itself arose out of the Combined Church Choirs - which itself coalesced out of a thanksgiving service at the Plaza Cinema in Oxted in 1946 as the country gave thanks for the end of the war. Before that was the Oxted & District Choral Society which boasted Dr R. Vaughan-Williams, O.M. as its patron and Mr R.A.J. Porter as its Hon-Treasurer - a man who many longer term residents of the area might remember.

The society is currently looking to recruit new members - particularly men. The social and health benefits are excellent, the music is heavenly and it's a lot of fun.

Please do support them.



WANTED MEN TO SING

COME TO AN OPEN EVENING

Oxted and Limpsfield Choral Society

United Reformed Church, Bluehouse Lane, Oxted, RH8 0AA

Sing along and be part of our choir

Try it

If you like it, come every Monday

REWARD

A FUN EVENING OUT



theWI

INSPIRING WOMEN

LIMPSFIELD VILLAGE

Limpsfield Village W I has enjoyed another happy year with an increased membership. At our recent AGM we said farewell to our past President and welcomed Catherine Webber to that position.

We meet at 12:30pm on the first Wednesday afternoon in the month at St. Peter's Hall and enjoy a varied programme of Speakers and activities, including Book Clubs, Knit & Natter, Walking Group, Bell ringing, Ladies Who Lunch and the occasional outing, culminating in the Christmas Lunch, held this year at The Royal British Legion, who provided a wonderful festive meal.

New members are always welcome or why not come along as a Visitor?



Our photo shows some of the members decorating our Christmas tree on the pathway to St. Peter's Church.

If you would like further details please contact me:

Maureen Bunn

07745 444388

Please Help!



LINK is an independent charity founded in 1974. It can provide transport for RH8 residents to take them to hospital, GP, dental, and other such appointments.

It would not be able to provide this invaluable service without the support of volunteers who are generous with their time and with the use of their own vehicles. Volunteers can talk about preferred length of journeys they want to undertake – i.e. to Oxted Health centre only or also to East Surrey Hospital and other routes.

LINK is in urgent need of more volunteers and if you are interested in becoming a volunteer driver and want to find out more about this please call Paula Myers on **01883 713379**.

Terry Davies

About our PARISH NEWS

The Parish News is produced by the St Peter's Limpsfield communications team under the guidance of an editorial committee consisting of members of our local community. On the committee are:

- | | | |
|---------------------------|------------------------|-------------------------|
| • Marianne Bell | • James Hunt | • Jean Scott |
| • Rev. Helen Cook | • Sophie Martin | • Ian Tolley |
| • Faye Cooper | • Paddy Monk | • Claire Turner |
| • Anthony Horsford | • Joy Moore | • Nicola Walters |

We are always looking for new advertisers, articles, photos or artworks to publish. If you have anything you'd like to share please speak to any of us on the editorial committee or use our contact details below.

TO ADVERTISE IN THIS MAGAZINE

Joy Moore
01883 713552

Paddy Monk
01883 715758

stpadvertising.lttm@gmail.com

TO SHARE YOUR ART, NEWS, FEATURES OR REVIEWS

Please send contributions
by

30th April 2023
to:

PetersNews@littm.org.uk

Don't forget to include as many
photos as you can!

The Limpsfield Directory

Around here	
Titsey Place	46
Accommodation	
David Gresham House	46
Antiques	
Steve Peacock - Furniture restoration ..	46
Bed & Breakfast	
Meads	47
Builders	
Cameron - Building & Landscaping	47
DB Refurbishment	47
Catering	
Green Bean	48
Cleaning Services	
Window Cleaning - Robert	49
KPN Wasp Removal/Guttering clean ...	48
Decluttering/Vintage items purchase	
Maureen Bunn	49
Decorating / Painting	
Brewers	49
C&C Southern	50
Electrician	
Murrell Electrical Services	50
Engraving/Jewellery	
Sauverin Withers	50
Estate Agents	
Jackson, Stops & Staff	51
Event Management	
Daniel Lay	51
Funeral Services	
Alex Jones - Funeral Director/Masons ..	52
Ebutt Funeral Service	52
Garden/Property Management	
Chartfords Tree Surgeons	55
Greenleaves Fencing & Gates	54
Greenwells Tree Surgeons	55
Linda Lewis Garden Design	56
Groceries	
Flower Farm	53
Memorial Stores	54
Squerries Food Hall	54
Health	
Melissa Barford - Foot Health	56
Body control - Pilates (Tania)	58
Gong Sound Relaxation	59
Limpsfield Lawn Tennis Association	58
Wells Barbers	58
Home Installation / Services	
H2O Plumbers	59
PAC Handyman Service	60
Home Help	
ILA Life	59
Interior Design	
Custom Interior Design by Morag	60
Peter Snashfold Furnishing	60
The Carpet Shop	57
Information Technology	
IT Problem - Scott Harris	61
Mr Computing	61
Member of Parliament	
Claire Coutinho	62
Motor Services	
Day's Garage	63
Restaurants	
Thai Pad	63
Schools	
Hazelwood	64
Venue Hire	
St. Peter's Church Hall	64

Titsey Place

OXTED, SURREY

HOUSE AND GARDENS OPEN ON SATURDAYS AND WEDNESDAYS, GARDENS ONLY ON SUNDAYS

Titsey Place, with its stunning garden, lakes, woodland walks, walled kitchen garden and park offering panoramic views, enchants visitors. After visiting the mansion house and grounds, why not relax in our tea room where light refreshments are available.

Open season: 17th May to 27th Sept 2023

House and gardens open: 1pm to 5pm every Wed and Sat. Also end of May and Aug bank holidays. Guided tours of the house at 1.30, 2.30 and 3.30pm (limited 20 per tour)

Tea rooms open: Wed, Sat, Sun 12.30pm

Gardens only open: Every Sun 1pm to 5pm

NGS open days: 28 May, 25 June,

16 July, 13 Aug 2023

*Please check the website for changes



Information Line: 07889 052461 www.titsey.org

ANTIQUE FURNITURE RESTORATION

ALL ASPECTS OF FURNITURE REPAIRS AND POLISHING UNDERTAKEN INCLUDING MODERN FURNITURE

30 YEARS EXPERIENCE

FREE ADVICE AND ESTIMATES GIVEN

CALL

STEVE PEACOCK
01883 743879

BED & BREAKFAST AT MEADS

Tudor-style family home offering comfortable accommodation. Convenient for town centre, Gatwick and the North Downs Way.

Downs Way.

Twin bedded en-suite room - £110 per night

Double bedded en-suite room - £100 per night

Single occupancy of a double room - £85 per night

Flat no longer available to rent.

23 Granville Road, Oxted, Surrey, RH8 0BX
01883 730115

e-mail: helenjholgate@gmail.com

Mrs Helen Holgate
www.bandbmeads.co.uk



LEE DUNN
DB REFURBISHMENT

- ◆ Commercial
- ◆ Residential
- ◆ Professional
- ◆ Reliable
- ◆ Quality

lee@dbrefurbishment.co.uk
www.dbrefurbishment.co.uk
Tel: 07825 560617



DAVID GRESHAM HOUSE
RESIDENTIAL CARE HOME

Our Philosophy: Caring, Honest, Open & Respectful

Since opening in 1986 we have been a leading provider of residential, respite and day care.

We are run by a highly professional team and supported by over 70 volunteers to provide residents with a full and active life within a secure and homely environment.

For information, please contact:
Pam Packham, House Manager
David Gresham House
2 Oak Close, Oxted, Surrey, RH8 0BA

Tel: 01883 715948

Email: info@davidgreshamhouse.co.uk

Web: davidgreshamhouse.co.uk

Regulated by



Our Care Home was rated as:
GOOD - April 2020

Registered Society 23568R - An Exempt Charity



Cameron

Building and Landscaping Services Ltd

All aspects of general building / landscaping undertaken including:



extensions • kitchens • bathrooms • plumbing
tiling • plastering • flooring • patios • driveways
brickwork • fencing • paving • renovation
property maintenance • and much more.



Registered and fully Insured - Tidy, friendly and reliable service

Free quotations and advice - Portfolio and references available



07855 894426 / 01883 715856

www.cameronservices.co.uk





GREEN BEAN CATERING

Superb food & wine for all occasions

- ✓ A personal and professional service
- ✓ Private parties, corporate events
- ✓ Weddings, funerals
- ✓ Barbeques and celebrations



TEL: 01883 743 033
MOBILE: 07557 264 434 / 07860 639 030
EMAIL: mail@greenbeancatering.co.uk

WINDOW CLEANING

Traditional or reach-and-wash system used

I offer a reliable, efficient, polite all-year-round service at fair prices

Established 1993

Also gutters, conservatory roofs and pvc cleaned

Please call

Robert

on

01342 892406
or **07973 307161**

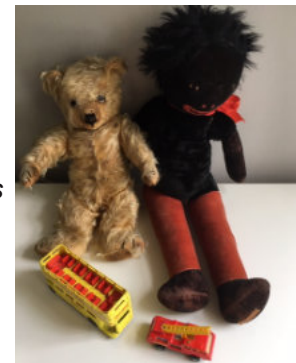
References on request



Downsizing or Decluttering?

Local lady would like to buy any **vintage items** such as:

- ✦ Toys
- ✦ Games
- ✦ Books such as Ladybird
- ✦ Kitchen and household items from by-gone days
- ✦ Silver
- ✦ small pieces of furniture etc.



Please call

Maureen

07745 444388



Nick Godsell

www.waspnestsdestroyed.com
www.tandridgeguttering.com

Treatment and removal of wasp/hornet nests

Gutter repairs and clearance

Jet washing services

Drain unblocking

Exterior painting



07904 142865 / 07761 232470

Proud members of
Checkatrade.com
Where reputation matters

Brewers
DECORATOR CENTRES

Your choice for
paint and wallpaper



and the very best in free advice

20% OFF



YOUR FIRST PURCHASE
Pick up a Brewers Card in-store
or register for one online

Over 170 stores nationwide. Visit your local branch in Redhill

OPEN TO THE TRADE AND PUBLIC SINCE 1904



C&C

(Southern)



Property Services Ltd

Established in 1990, we have built a reputation for quality, reliability and value.

For all your decorating needs.

Call us for a free estimate and advice.

C&C House, Unit B 10 Beadles Lane, Oxted, Surrey RH8 9JJ

Tel or Fax: 01883 716657 Mobile: 07850 649329 / 0

Email: cc.southern@btconnect.com



MURRELL
Electrical Services



Local Electrician

Part P Registered
Fully qualified
Fully insured
No job too small

Free estimates

07847 395437

01959 574905

ELECSA



Sauvarin Withers
Engraver & Jeweller

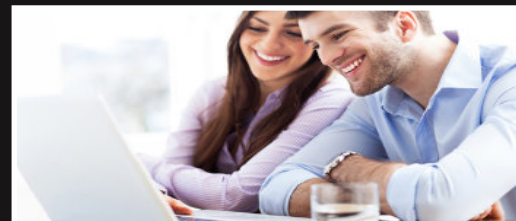
- Jewellery & Silver repair
- Hand, Machine & Seal Engraving
- Wedding rings
- Signet rings
- Commission Work

Contact me on
07741 463283
dudleyjsw@btinternet.com

JACKSON-STOPS
jackson-stops.co.uk

YOUR PROPERTY SEEN
IN ALL THE RIGHT PLACES

01883 712375 | oxted@jackson-stops.co.uk
17-19 Station Road West, Oxted RH8 9EE



Daniel Lay
Event Services

Daniel Lay Event Services are a **professional party planning** and **event management** company. We can supply everything you require for an event or individual elements to make it happen. Some of our many services include:

- Mobile Bars & Party Staff
- Selfie Photo Booths
- Furniture Hire
- Draping, Decoration & Prop Hire
- Gazebo & Marquee Hire
- Lighting, Sound & AV Equipment Hire
- Professional DJ Packages
- Outdoor & Indoor Cinema Experiences

plus much more

Tel: **0800 112 0808** Email: contact@daniellay.co.uk Web: www.daniellay.co.uk
Instagram/Facebook: [@daniellayevents](https://www.instagram.com/daniellayevents)

TAILORMADE FUNERAL PLANS FROM

ALEX JONES

Independent Family Funeral Directors

One of the few remaining family-owned, truly independent funeral directors in the area

Peace of mind for you and your family

Specify your wishes in advance

Protection against rising funeral costs

A range of flexible payment options

Arrange the send off you want

Alex Jones Funeral Directors
1 East Grinstead Road
Lingfield, RH7 6EP
01342 832534
www.alexjonesfuneraldirectors.co.uk

We also have funeral homes in;

Forest Row: 01342 822399

Oxted: 01883 730383

Edenbridge: 01732 860047



£40 M&S
vouchers
with every
plan

PROUD TO OFFER
Golden Charter



FUNERAL DIRECTORS

A TRADITIONAL FUNERAL SERVICE FROM LOCAL FUNERAL DIRECTORS

Telephone quotes available
Memorial advice and products

International repatriation specialists
Pre-paid Funeral Plans

EBBUTT FUNERAL SERVICE

HIGH STREET, LIMPSFIELD, RH8 0DR
01883 713767

15 LIMPSFIELD ROAD, SANDERSTEAD, CR2 9LA
020 8916 0694

BC BAKER & SON

15-17 HIGH STREET, CATERHAM, CR3 5UE

A member of Dignity plc. A British company
www.dignityfunerals.co.uk
Members of the National Association of Funeral Directors

FLOWER FARM

*Order online
Free delivery!*

*Only the best
local produce!*

BUTCHERY • BAKERY • DELI • FISHMONGERS • FRUIT & VEG
WWW.FLOWER-FARM.CO.UK
TEA ROOM • PUB GARDEN • BREWERY • TAP ROOM • FESTIVALS & EVENTS



Squerries Estate Food Market outside the Estate Deli every Saturday 9:30 am - 3 pm.
Fresh fish and seafood - sourdough and pastries - fresh cut flowers.
Garden Café - views overlooking our Rosé vineyard.
Locally roasted coffee and light bites.



Find us at Westerham Valley, Beggars Lane, Westerham, TN16 1QP what3words: eagle.invent.flats
www.squerries.co.uk

Fresh local produce, groceries, newspapers and a warm welcome!

Monday - Friday 8am to 5pm
(Post Office opens at 9am and is shut 1-2pm)
Saturday - 8am to 12.30pm
Sunday - 8am - 12.00pm
(Post Office is shut on Sunday)

Run by the community for the
community since 1999

Tel: 01883 713306
www.limpsfieldstores.co.uk

Creating Beautiful Boundaries Fencing & Gate Specialists in East Grinstead & Surrounding Areas

Replacing, Repairing & Protecting All Types Of
Fencing & Gates, Free Estimates with
Outstanding Customer Service & Workmanship.



"I was thrilled with the quality
of work carried out by Lee and
his team. The guys arrived onsite
on time everyday. They had an
incredible work ethic and attention
to detail. Very professional
and reliable. I would definitely
recommend them."
- customer in East Grinstead

Call Lee or Andy
07944 371863
www.greenleavesuk.com



Proud Members of Checkatrade with over 420 reviews

Chartfords Trees Ltd

Fully qualified and insured Tree Surgeons
carrying out all aspects of tree work and
maintenance.

Tree Removal & Felling

Pruning Work

Crown Lifting
Crown Reducing
Crown Thinning

Safety Work

Removal of Dead Wood
Emergency Call Out

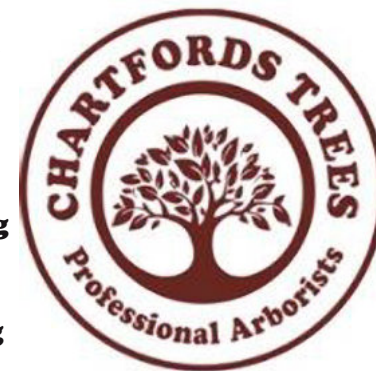
Hedge Trimming

Shrub Pruning

Stump Grinding

Tree Planting

Logs & Woodchip



Free no obligation quotations

t 01883 460 160

m 07752 987 318

e info@chartfordstrees.co.uk

w www.chartfordstrees.co.uk

Find and review us at www.checkatrade.com/ChartfordsTreesLtd/



Find us in

Checkatrade.com



GREENWELLS
TREE SURGEONS



Carrying out all aspects of professional tree surgery/hedgecutting,
garden/woodland clearance and maintenance, planting schemes.

- Your local tree surgeons ● Friendly and reliable service ● No job too small
- NPTC Qualified ● Full public liability insurance



Free Quotations

OUR SERVICES

- Pruning
- Reshaping
- Tree removal
- Hedge cutting
- Deadwooding
- Safety inspections
- Stump grinding
- Hedging
- Tree/shrub planting



Stuart mob: 07545 580692 - Office: 01959 561101
info@greenwelltreesurgeons.co.uk www.greenwelltreesurgeons.co.uk
Find us on [f GreenwellsTreeSurgeons](https://www.facebook.com/GreenwellsTreeSurgeons) [yell.com](https://www.yell.com)



linda lewis
garden design

07736 954793

lindalewisgardendesign.co.uk

Design | Renovation | Consultancy

Melissa Barford S.A.C Dip FHPT S.A.C Dip FHPP

Foot Health Practitioner

Working towards a healthier community

For treatment in the comfort of your own home such as:

- Professional Toenail Cutting
- Callus/Hard Skin Removal
- Corns
- Conservative Treatment for Ingrown Toenails
- Verruca Advice
- Diabetic foot Assessment
- Thickened Nails
- Dry/Cracked Heels
- Advice for fungal Nails

Please call

07885 933032 / 01959 569292



THE CARPET SHOP

BEAUTIFUL
FLOORINGS

- ◆ Carpet
- ◆ Vinyl
- ◆ Laminate
- ◆ Luxury Vinyl

Your local, family run flooring solution centre, under the proprietorship of Hulya and Volkan for 17 years.

1 Station Road, Edenbridge, TN8 5HP

Tel 01732 667223

137 Station Road East, Oxted, RH8 0QE

Tel 01883 818659

oxtedcarpetshop.co.uk - Email: oxtedcarpetshop@hotmail.com

BODY CONTROL PILATES

Matwork Classes & Pilates for Rotational Sports

At Limpsfield Tennis Club

1:1 Reformer Programmes

Contact:

Tania Turner

07793 908442

01883 330689

BODY CONTROL
PILATES®



WELLS BARBERS

Est over 30 Years



MENS HAIR CUT **£9.50**

OAPS AND KIDS **£8.00**

No appointment necessary

Tel: 01883 716979

36b Station Road West, Oxted
OPPOSITE BARCLAYS BANK,
BEHIND JJ'S CHILDRENS WEAR

HOME VISITS BY ARRANGEMENT

Opening times: Mon-Weds 8.30-5.00

Fridays 8.30-6.00

Closed Sunday and Thursday



ENJOY A RELAXING GONG BATH

Relax as you lay on a mat and listen to the soothing sounds of Himalayan Bowls, Crystal Bowls, and Gongs.

Benefits include

less stress and anxiety
improved sleep and raised energy levels
sense of wellbeing and positive mood

Last Tuesday of every month 6.00 – 7.00
Hever Castle Wellbeing Centre

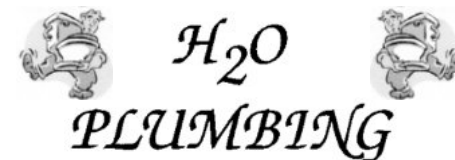
Cost: £15.00

Book a session:

Email: sue@gongsound.co.uk

Tel: 07803 015578

Web: gongsound.co.uk



*General Plumbing
Services, Alterations &
Bathroom
Installations*

*No job too small
City & Guilds Trained*

*Call Richard on
01883 712523
or 07876 450420*

The
Limpsfield
Club

TENNIS | SQUASH | RACKETBALL | BADMINTON | TABLE TENNIS | GYM-LITE | BAR

SERIOUS ABOUT SPORT: GREAT FOR FAMILIES & FRIENDS

16 Tennis Courts (7 Floodlit) & Mini Tennis Court & Wall.

6 Squash & Racketball Courts (Heated & Cooled).

Badminton Hall & separate Sports Hall for Table Tennis.

Gym with the latest machine with 'Virtual Reality' programmes.

Comprehensive Professional Coaching for all sports.

Adults & Juniors welcome at competitive rates.



Web: www.limpsfieldtennis.co.uk Email: manager@limpsfieldtennis.co.uk

Limpsfield LTC, Detillens Lane, Limpsfield, Surrey RH8 0DH Tel. 01883 714079

Making a big difference with the little things



Independent
Living
Advisers



Need a little help? Let us make the difference
From cooking, cleaning, ironing or simply sewing a button,
our people* work with you to help make your life easier.

Call Cecilia on 01892 210100

Email: cecilia.trueman@ila.life

www.ila.life

* DBS checked, Fully Insured, References Available



Peter Snashfold
Furnishings

Upholstery · Curtains · Blinds

Unit 1C
Warren Farm Stables
Main Road
Sundridge
Sevenoaks, Kent
TN14 6EE

07715 206656

petersnashfoldfurnishings
@hotmail.com

Free
estimates
& fully
insured



**PAC handyman
services**

PAC Handyman Services is your
local solution to everyday
building, maintenance and
installation projects within the
home and garden.



**T: 01342 843348 | 07711
939370 pac-handyman.co.uk**

Custom Interiors by *Morag*

- **Handmade curtains** and blinds to the highest quality finish
- **Designer cushions** and throws to complement and lift your existing scheme
- Help with your fabric selection and a **full interior design service** to give you a look you'll love
- Traditional upholstery
- Full and part **project management** for house renovations, extensions and room updates



Tel No. 01883 722283
Mobile 0777 394 0422
www.morag-interiors.co.uk

Chardleigh Cottage, Pains Hill, Limpsfield, Surrey, RH8 0RG

Computer Problem?

For home or business.

Problem solving for Windows, email, viruses, internet connection, broadband and other computer related issues.

Data and registry recovery. Backup solutions.

Simple and professional advice given on all aspects of personal computing, including purchasing, upgrading and maintenance.

Computer lessons (Windows, Internet, Microsoft Office...).

Networking: secure wireless, dLAN, LAN, WAN, Active Directory.

Bespoke software and website development (e-commerce).

Microsoft
CERTIFIED
Professional

Scott Harris
BSc Computer Science
Hons, MCP, MCAD

Microsoft
CERTIFIED
Application Developer

Telephone:

01732 361234

Mobile:

07779 285839

Email:

scott@MyITWizard.co.uk



MR Computing

38 years of combined experience in IT

**Local, Professional and Family Owned
business since 2005**

NO FIX NO FEE & NO CALL OUT CHARGE

- Punctual visits at an agreed time or collection & drop off service.
- Apple & Windows computer & tablet/phone support for Business & Home.
- Reliable wireless range improvement for Home & Business.
- Most work carried out in a one hour visit. Fixed price workshop repairs.
- Repairs, speedup and maintenance, Data transfer/recovery, Computer malware/virus removal.
- New computers supplied/set up and made to feel familiar.



**Call Mark
& Sue on:**

01883 730345

or

0800 6129534

Email: office@mrcomputing.net



Website - www.mrcomputing.net
Reviews - mrcomputing.net/reviews

Claire Coutinho MP

MEMBER OF PARLIAMENT
FOR EAST SURREY



Since I was elected, I've held regular surgeries with local residents to talk about the issues that matter to them.



I've also been holding regular remote surgeries by telephone, so if you need any help or want to raise an issue of importance to you, please don't hesitate to email or call me to set up a meeting.

Claire

0207 219 5972

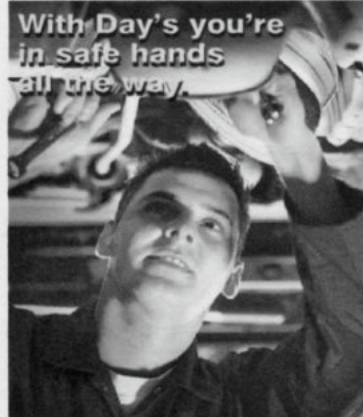
clairecoutinho.com

@claire.coutinho.mp
@parliament.uk

claire4eastsurrey

@clairecoutinho

Promoted by Tim Hall, on behalf of
Claire Coutinho, both at 6 Godstone
Road, Lingfield RH7 6BW



With Day's you're
in safe hands
all the way.

Your local one stop car repairers



✓ Services & Repairs
(all makes)

✓ Bodywork/ Car
Sales

✓ Delivery &
Collection Locally

✓ Tyres & Batteries
fitted free

DAYS GARAGE

Serving the community since 1957

Unit 6, Gardiner Business Park Little Browns Lane, Edenbridge
Kent TN8 6LH 01732 866544

Ivy Park, Ivy Mill Lane, Godstone Surrey RH9 8NE 01883 742822

17 Hurst Green Road, Oxted Surrey RH8 9BS 01883 730058

www.daysgarage.co.uk



while
you
wait!

MOT's



thai pad

Thai Tapas Bar & Restaurant

Lunch set menu
from £11.50

Sunday 2 course
set menu £14.95

5-6 Hoskins Walk, Oxted, RH8 9HR

CALL: 01883 717190

EMAIL: contact@thaipadoxted.co.uk

WEB: www.thaipadoxted.co.uk





Hazelwood School

The alphabest of Ha-zelwood

- ☐ **a**lgebra and arithmetic ☐ **b**reakfast club
- ☐ **c**omputing and coding ☐ **d**esign technology
- ☐ **e**xperiments and explosions
- ☐ **f**orest schools ☐ **g**ifted and talented

www.hazelwoodschool.co.uk. Contact Nick Tappin on 01883 733841



St Peter's Church Hall and Glebe Room

High Street, Limpsfield, RH8 0DG

For regular or
occasional hire



Car parking
Disabled access



Large hall with stage
Well-equipped kitchen
with hatch to Hall and
Glebe Room
Entrance hallway and W.Cs



Smaller Glebe Room
Can be booked
separately when main
hall is in use



For availability and costs, please contact Pat Davies - 01883 716487 or email stphlimpsfield@gmail.com. Visit www.stpeterslimpsfield for more details.

*THANK YOU FOR LOOKING AFTER
LIMPSFIELD COMMON*