



St Peter's
Parish Church
LIMPSFIELD



PARISH NEWS

SUMMER 2023

online at stpeterslimpsfield.org/parish-news

LEARN TO RING

KEEP THE CHURCH BELLS RINGING

We Need Your Help!

We are recruiting now. Come and join us and to help ring our church bells. We have a small pool of ringers but we **urgently** need to recruit more otherwise we risk the ancient tradition of hearing church bells dying out.

Most people have the ability to become a good ringer.

- **Great physical strength is not required.**
- **You don't have to be a Christian or attend church.**
- **All ages from 12 upwards are welcome, particularly those of middle years.**

What To Expect

A fun, active, social hobby - exercise your body and stimulate your mind and meet new friends (it's not uncommon to go to the pub after sessions!)

Teamwork - it can be a great family or Duke of Edinburgh activity

Financial rewards - you will get paid for ringing at weddings

When And Where

It doesn't take up too much time. Practice sessions take place for 1-1.5 hrs once a week and Sunday ringing is done on a rota basis.

Where: St Peter's Limpsfield Bell Tower

Practice Night: Tuesday evenings, 7.45pm

Service Ringing: Sunday mornings for 30mins from 9.30am + the occasional wedding or special occasion



For an informal chat
contact the Tower Captain
David Bell
01883 712970
dbell1141@btinternet.com



Dear Friends,

I'm sure that many of us enjoyed watching the King's Coronation and I know that for some of you it will have brought back happy memories of the coronation of the late Queen Elizabeth II. As expected, we were gifted with great theatre, majestic music and ceremonial grandeur and there were key parts for political, civic and international leaders.

It was the Archbishop of Canterbury who had the privilege and duty of officiating and of crowning the Sovereign and his Queen. This served to remind us all that power is shared by means of a covenant between Christ the King, Charles our King and all people – a three-way promise which invites submission to the kingdom of God.

At St. Peter's Church the children from Hazelwood School visited for a special Coronation assembly. They shared interesting facts about our new King, including that he has a frog named after him! At our All-Age Service we offered our own elected King items we thought he might need, including a hard hat! Later in the day many from our community enjoyed a picnic on the Glebe field.

The village looked splendid with bunting hanging from the trees and lampposts, a large crown on the path leading up to the church and the letter box outside the Memorial Store was adorned, courtesy of the WI, with a beautifully crocheted crown.

What next? Well, I guess it has to be Limpsfield in Bloom – will it be another gold?

Whatever we are doing, either on a Sunday morning or at other times, you are always assured of a warm welcome, just come and join in!

With my love and assurance of prayers,

Rev. Helen



Front cover: Coronation picnic - more photos on inside back cover

Team Rector of Limpsfield & Titsey:

The Rev Helen Cook
Email: hjwcook@yahoo.co.uk

01883 unless stated
07530 609511

Clergy of the Limpsfield & Tatsfield Team Ministry

The Rev Paul Perkin (St Andrew's)
Email: paul.perkin6@gmail.com
St Mary's Tatsfield (Team Vicar - Interregnum)

412454

St Peter's Parish Office

Church Coordinator: Caroline Campbell
Email: stpeterschurch.lttm@gmail.com

712512

Churchwarden: Nila Spiller
Email: Nila.Spiller@gmail.com

716388

Churchwarden: Joy Moore
Email: contactjoymoore@aol.com

713552

Stepping Stones for little ones: Sarah Ching
Xplore (for school age children): Helen Kemp
Church Flowers: Elizabeth Stoughton-Harris
Road Stewards: Jean Scott
Bell Ringing: David Bell

07958 678771
714068
717026
714150
712970

Email: dbell1141@btinternet.com

St Peter's Hall Bookings: Pat Davies
Email: stphlimpsfield@gmail.com

716487

Parish News: Ian Tolley
Email: petersnews@littm.org.uk

07711 926856

The Parish Office at the Rectory is open on Tuesday to Thursday from 09:00am-5:00pm. The office can be reached on 01883 712512 or e-mail via: stpeterschurch.lttm@gmail.com

Address: St Peter's Church Parish Office, High Street, Limpsfield, RH8 0DG

CHURCH NEWS

SUNDAY SERVICES

St Peter's has a regular pattern of Sunday morning worship: a quiet **8am Holy Communion service** and a main **10am Parish Eucharist**. On the first Sunday of the month there is a shorter, more informal **All Age Family service at 10am**. Everyone is always welcome.

LIVE STREAM

The 10am service is live streamed on the St Peter's YouTube channel every Sunday except the first Sunday of the month. Visit YouTube and search 'St Peter's Limpsfield' or find details at www.stpeterslimpsfield.org.

MESSY CHURCH

On **Sunday 19 June (Father's Day)** Messy Church will take place in the Millennium Room during the 10am morning service instead of at 3pm. This will be the final Messy Church of the term.

FRIENDS OF ST PETER'S

The Friends of St Peter's has been set up to help preserve our historic church building for generations to come. All money raised from the Friends of St Peter's will go towards maintaining the fabric of the church. No money will go into general funds or to the Diocese. If you would like to become a Friend of St Peter's please contact the Parish Office for an application form.

COFFEE MORNINGS ON THE GLEBE

Our Wednesday morning Coffee Mornings will be down on the Glebe Meadow from **Wednesday 7 June**. Bring your own chair (if you can!) and beverage of choice. Cake provided. Everyone welcome.

TITSEY CHORAL EVENSONG

Our annual service of Choral Evensong for the Feast of St James will be taking place at St James' Church Titsey on **Sunday 23 July** at 6.30pm.



Spring Highlights

Spring was a busy season in the church. There have been many christenings, with more booked in for the Summer and Autumn. It has also been a busy time on the social front too. Here is a round up of what has been happening.



Christening of Teddy Tozer, March 2023



6am outdoor Ascension Day service at St Mary's Tatsfield,
18 May 2023



Cutting the Coronation cake

The Coronation Picnic was a great success. Like many people around the country, we gathered for a community picnic on the Sunday of the Coronation weekend. Lots of people came and set up a table on the Glebe Meadow with their neighbours and friends to enjoy a picnic and entertainment. For the children there was a balloon modeller and a Messy Church table to make your own crown.



Coronation Picnic, Sunday 7 May 2023



The 10th annual Big Paint took place on 20 May in the hall. This year's painting was The Railway Station by William Frith (1819-1909). The original took a year to paint and was finished 1862. Ours however took a mere nine hours, but it was done with over 70 painters of all ages and abilities (the youngest being only five!). Well done to everyone involved and to Richard Spiller and his team who put the whole event together.

Caroline Campbell



CHURCH DIARY: JUNE - AUGUST 2023

The church is open every day during daylight hours.



Date	Services June-Aug
Sun 4 June	TRINITY SUNDAY 8am HOLY COMMUNION 10am ALL AGE SERVICE
Wed 7 June	11am COFFEE MORNING on the Glebe Meadow
Sat 10 June	1pm WEDDING of Darcey Le Ruez and Christopher Hawker
Sun 11 June	FESTIVAL OF BARNABAS THE APOSTLE 8am HOLY COMMUNION 10am PARISH EUCHARIST * (preacher Sarah Butt)
Wed 14 June	11am COFFEE MORNING on the Glebe Meadow
Sun 18 June	SECOND SUNDAY AFTER TRINITY / FATHER'S DAY 8am HOLY COMMUNION 10am PARISH EUCHARIST with MESSY CHURCH * (led by Rev'd David Weightman)
Wed 21 June	11am COFFEE MORNING on the Glebe Meadow
Sun 25 June	THIRD SUNDAY AFTER TRINITY 8am HOLY COMMUNION 10am PARISH EUCHARIST * (preacher Vic Stone)
Wed 28 June	11am MUSICAL MEMORIES in the Millennium Room

Date	Services June-Aug
Sat 1 July	12 Noon-4pm LIMPSFIELD VILLAGE FETE on the Glebe Meadow
Sun 2 July	ST PETER'S PATRONAL FESTIVAL: celebrating St Peter the Apostle 88am HOLY COMMUNION 10am ALL AGE SERVICE with BAPTISM
Weds 5 July	11am COFFEE MORNING on the Glebe Meadow
Sun 9 July	FIFTH SUNDAY AFTER TRINITY 8am HOLY COMMUNION 10am PARISH EUCHARIST * (led by Rev'd Paul Perkin)
Weds 12 July	11am COFFEE MORNING on the Glebe Meadow
Sat 15 July	2pm WEDDING of Emma Cook and Justin Boylan-Toomey
Sun 16 July	SIXTH SUNDAY AFTER TRINITY 8am HOLY COMMUNION 10am PARISH EUCHARIST *
Weds 19 July	11am COFFEE MORNING on the Glebe Meadow

Date	Services June-Aug
Sun 23 July	SEVENTH SUNDAY AFTER TRINITY 8am HOLY COMMUNION 10am PARISH EUCHARIST * 6.30pm CHORAL EVENSONG at St James' Church Titsey
Wed 26 July	11am COFFEE MORNING on the Glebe Meadow
Sun 30 July	EIGHTH SUNDAY AFTER TRINITY 8am HOLY COMMUNION 10am PARISH EUCHARIST *
Wed 2 Aug	11am COFFEE MORNING on the Glebe Meadow
Sun 6 Aug	TRANSFIGURATION OF OUR LORD 8am HOLY COMMUNION 10am ALL AGE SERVICE 12.30pm BAPTISM
Wed 9 Aug	11am COFFEE MORNING on the Glebe Meadow
Sun 13 Aug	TRANSFIGURATION OF OUR LORD 8am HOLY COMMUNION 10am PARISH EUCHARIST * 12.30pm BAPTISM
Wed 16 Aug	11am COFFEE MORNING on the Glebe Meadow

Date	Services June-Aug
Sun 20 Aug	EIGHTH SUNDAY AFTER TRINITY 8am HOLY COMMUNION 10am PARISH EUCHARIST *
Wed 23 Aug	11am COFFEE MORNING on the Glebe Meadow
Sun 27 Aug	TWELFTH SUNDAY AFTER TRINITY 8am HOLY COMMUNION 10am PARISH EUCHARIST *

PARISH REGISTER

FUNERALS & THANKSGIVING SERVICES

16 March	Funeral of Peter Keymer
21 March	Funeral of John Davey
4 April	Funeral of John Ingram
13 April	Funeral of Tom Grafham
22 May	Funeral of Sabina Hammond
30 May	Thanksgiving Service for Judith Louis

The old joke is that “*philately will get you anywhere*”. Sadly this is no longer the case. For a hundred years stamp collecting was one of the most popular children’s hobbies - introducing collectors to distant, exotic lands as well as exquisite, tiny works of art created by some of the world’s great artists. Looked at over time a stamp collection represents an extraordinary and often beautiful cultural archive.

According to the Encyclopedia Britannica the word philately was coined in 1864 by Frenchman, Georges Herpin, who invented it from the Greek *philos*, “love,” and *ateleia*, “that which is tax-free” and in that respect at least we are all philatelists. The tax free element refers to the great innovation of Sir Rowland Hill who invented the world’s first postage stamp - the Penny Black - in 1840. Prior to this you had to pay per sheet to receive your letter, but the postage stamp permitted delivery “free at the point of use” to the recipient, rendering it, from their perspective, untaxed.

The Penny Black and the distribution infrastructure surrounding it enabled anyone to send a letter for just a penny (about 25p in today’s money). This was the start of an information revolution unparalleled until the birth of the internet. You can trace the fact



Spot the difference: an early re-use of artwork - the Wyon medal and the Penny Black

that we can all read (or indeed write) this article directly back to that moment.

The Penny Black featured the head of the reigning monarch - Queen Victoria at the age of 15 (interestingly she never aged on stamps and the postal service carried on using this image until she died aged 81). It was believed that the image of a face as drawn by a skilled artist would be diffi-

cult to forge and the Penny Black therefore co-opted the image already produced for the Wyon medal in 1837. It proved very popular with the public - less so with postal staff who found cancelling a black stamp with black ink didn’t work too well. Within a year it had been replaced with a red version and we’ve had very few black stamps ever since.

The unique relationship between Royal Mail and royalty means that any coronation is a “big deal” in stamp collecting with the creation of a brand new “definitive” stamp. When Queen Victoria died in 1901 the incoming King Edward VII had strong ideas about who should design his stamps. Austrian artist Emil Fuchs was picked at his request having produced well received portraits of the King’s parents.

There was quite a debate as to which way the

new King would face. In coins there had been a convention to reverse the direction an incoming monarch faced since Charles II who wanted his coins to be recognisably different from his predecessor: Cromwell. They tried facing the new King to the right, looking out of the envelope. It looked rubbish and the new king was not impressed. Since then all portraits have looked left across the envelope - a much more pleasing design on a rectangular background.

There's an interesting curio at the end of Edward VII's reign. In 1910 a new 2 penny stamp was designed. The metal die was engraved, and colour trials were produced. Tyrian Plum, a shade of purple, was approved and 100,000 sheets (24,000,000 stamps) were printed. Sadly the King died before they were released, and the Postmaster General's took the difficult decision to destroy them all. Only two sheets remain and they are, I believe, the most valuable in UK philately - worth an estimated £110k per stamp.



*The famous "Tyrian Plum"
- the UK's rarest (and most valuable) stamp*

Years have passed and monarch has followed monarch. I have a fondness for King Edward VIII's stamp which was designed by precocious teenage philatelist Hubert Brown who wrote to the Post Office asking permission to submit a design for the new King's stamps. His design won out over the "in house" options submitted by, amongst others, the President of the Scottish Philatelic Society. Of course, the Post Office didn't want to admit



Teenager Hubert Jones' artwork on the left and the final stamp on the right.

that the new stamp had originated from the work of a child. They coyly wrote to Brown stating the new stamp would include "*some features in common with that which you suggested.*" Nevertheless this novel approach to stamp design pre-dated Blue Peter competitions by at least 40 years. Of course, as it turned out Edward VIII was on the throne for less than a year before abdicating - making these stamps comparatively rare.

The coronation of Elizabeth II in 1953 caused much excitement across the country and in Post Office circles. A lot of organisations tried to use the new Queen's "movie star looks" to sell their wares and the Post Office was certainly not going to be left behind. Instead of the usual "coin based" profile they approved a racy $\frac{3}{4}$ profile of the Queen wearing a diamond diadem taken by notable pioneering photographer Dorothy Wilding in February 1952.

Stamp designers never really liked the image. It was partly a technical



Stamp featuring the "Wilding Head" - designers were not happy

problem of fitting it into the pictorial stamps which had become extremely popular over the previous two decades. It was also felt the image should represent the monarchy rather than the person of the Queen herself. As a result sculptor Arnold Machin produced the famous cast of the Queen's profile in 1964 which was used on stamps between 1967 and 2023. Like Queen Victoria before her, Elizabeth II never aged on stamps and as a result the image of this remarkable sculpture has become famously the most reproduced image in history.

Given all this background it's not surprising that the Royal Mail once again "recycled" existing artwork to produce the new King Charles III stamp. The guidance from the new King was that he didn't want to be depicted wearing a crown - *"just the face of a human being, on a plain background, almost saying 'this is me and I'm at your service'"* said Royal Mail's Director of External Affairs and Policy, David Gold. A cast of King Charles' head was thus sculpted for the Royal Mint by Martin Jennings who had previously found much acclaim with his statues of John Betjeman at St Pancras Station, Mary Seacole in the grounds of St Thomas' and George Orwell outside the new BBC Broadcasting House.



Arnold Machin's famous plaster cast



Martin Jennings with his plaster cast of King Charles

Jenning's plaster cast was photographed and this image was digitally re-lit to create the portrait used on stamps. Multiple versions of the King's profile, all subtly lit differently, were experimented with. Contrast and highlights were adjusted and tested on approximately 20 different colours. Two of these options were selected based on which worked best on light colour and another for darker coloured stamps. The final colours chosen were plum purple for first class (perhaps in tribute to the Tyrian plum), holly green for second class, marine turquoise for large first class and dark pine green for large second class. The new stamps went on sale on April 4th 2023 and, I'm sure you agree, mark a pleasing continuity with the past.



Ian Tolley

Ian works for **The Postal Museum** in Farringdon, London where all the items mentioned in this article can be seen until 3rd September 2023.

Coronation Day

I had the great honour to attend His Majesty the King's Coronation on 6 May. This is because I work at the Foreign, Commonwealth and Development Office, currently based at HQ in London. The senior diplomatic team was on duty to look after and engage over 450 foreign dignitaries attending, including 92 heads of state and government.

We hosted them at The King's reception at Buckingham Palace on the Friday afternoon, and then had to be at Church House at 0630 on the Saturday to greet guests arriving in carefully choreographed sequence until they were seated in the Abbey by around 0930.

Much of this was about practicalities (including ensuring that not too many cups of tea were drunk before the long service), but it was for us also about advancing UK priorities and deepening relationships. In 24 hours we logged over 740 engagements covering 185 countries by 27 UK principals, including the Foreign Secretary meeting 120 delegations. Beyond the pageantry and celebration this was the clearest possible display of UK influence on the world stage.

The Coronation Service itself felt to me like an extraordinary blend of tradition, ritual and intimacy, seeming both personal and global at the same time. As I like to remind people, ours is the world's oldest hereditary theocracy. Westminster Abbey is misnamed as it is technically a "Royal Peculiar", or a church without a diocese or bishop, controlled directly by the monarch, after Elizabeth I kicked out the monks in 1560. It is impossible to go in without feeling the weight of history on every side, and so it was on Saturday 5th. The service book opened by setting this context: *"When William, Duke of Normandy, defeated King Harold at Hastings in 1066, he set his sights on being crowned in the new Abbey Churchy that Edward the Confessor had built beside his Palace at Westminster. For almost a thousand years,*

Westminster Abbey has remained the place of coronation for our monarchs... King Charles III was the fortieth sovereign to be crowned at Westminster Abbey, with the original order of service, *Liber Regalis*, written in Latin and based on that of King Edgar at Bath in 973. The music was an integral part of this tradition. As a singer, Parry's *I Was Glad* and Handel's *Zadok the Priest* never fail to put a lump in my throat; and I was equally moved by some of the new commissions, particularly Tarik O'Regan's *Agnus Dei*.

There was also the military procession and acclamation. First Sea Lord Ben Key explained to me how complex this was to organise, with over 4000 troops needing special trains into Waterloo and synchronised metronomes in the ear pieces of the drum majors (apparently at 108 beats per minute). It was not always done so smoothly: in 1821 George IV found his path back from Westminster blocked by two overturned carriages and was

forced into a detour "down *brothel-ridden backstreets and ended up having to cross a foetid culvert by a bridge so rickety it was out of bounds even to wheelbarrows*". Perhaps similar to Edward II's 1308 coronation where the guests managed to consume 1,000 casks of wine.

After the Service finished we had a final round of engagement, hosting the overseas guests at Church House before their allocated departure slots. Talking



Christian looking appropriately suave



to them it was clear that they were all affected by this weight of tradition. Equally they commented with admiration on the seamless organisation that had been brought to bear, and indeed followed our instructions with good grace.

Underpinning it was an extraordinary amount of hard work from right across FCDO and the public service. Of course, when observers comment "*doesn't it all run smoothly*" it is easy to overlook that that doesn't happen by

accident, in the best tradition of the "service" that His Majesty highlighted. Colleagues giving up their weekends to man the operations centres, to staff checkpoints, to respond to last minute requests from delegations, all proud to be a part of history.

This was the culmination of months of work by tens of thousands of people.

By the time I got the train back to Oxted on Saturday evening I was definitely talked out - though not so much that it wasn't an equal pleasure to be at the Glebe Field for Limpsfield's picnic on Sunday!

As I reflected on it all I returned to the personal. I thought of my family and all those who support me. I think if you ever relax enough to take these events for granted, you shouldn't be part of them. For much of the day I felt my grandmothers at my shoulder, proud certainly, but also telling me to stand up straight. It was a privilege to be a part of.

Christian Turner

My Family's Roots in Limpsfield

Before my parents moved to Limpsfield two years ago, I had little knowledge of the village, though I had visited Oxted for a walk on the North Downs. We liked Limpsfield very much, but were aware of no previous family connections with it. As a professional genealogist and house historian, I am well placed to find such links.

Since early last year, I have carried out research using the deeds of the Titsey estate (held at the Surrey History Centre in Woking) which has given me considerable knowledge of the different plots of land in the High Street, and the people who owned and lived in them before the twentieth century. I have also read Kay Percy's dissertation on the medieval manor of Limpsfield, which is also held at Woking.

While reading this work, I was surprised to find mention of a Robert Belknap holding court at

Limpsfield under the Statute of Labourers in 1351. The name Belknap, a variant of Bel(l)nap, is important in my family history. My great-great-great-great-grandfather, Robert William Edward Bellnap, was a paper stainer and costermonger in East London who died in 1897. Despite having been married four times, he had no surviving sons, and the surname died out in Britain. One of his great-granddaughters named her bungalow on Canvey Island 'Belnap', trying perhaps to keep the name alive. Yet in the USA, there are many Belnaps and

even a Belnap Family Organization, since one branch of the family emigrated to Massachusetts during the 1630s. An early and prominent member of the Latter-day Saints Church was named Gilbert Belnap. I have had the pleasure of connecting with some American cousins.

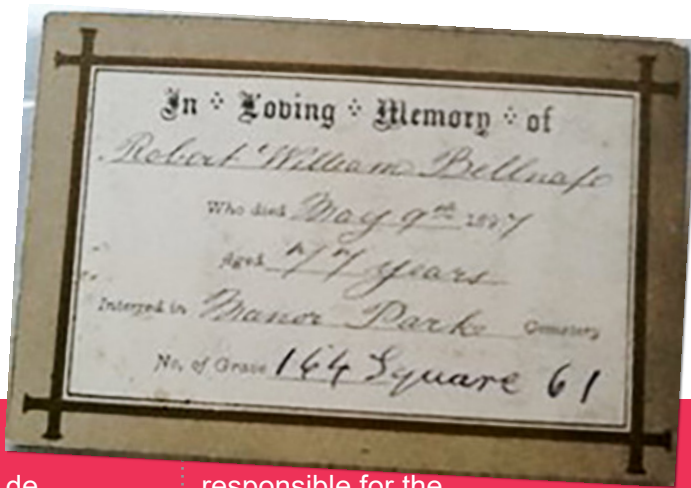
Although the precise genealogy remains to be worked out, I think that there can be no doubt that Bellnap is a unique surname, and that every person who has Bellnap ancestry must be a relation of Sir Robert Belknap, a judge who was Chief Justice of the Common Pleas in the fourteenth century. This is because the surviving branches of the Bellnap family were by the seventeenth century living in and around the small Hertfordshire



town of Sawbridgeworth, where Robert Belknap had owned a part of the manor in 1369. It is the same person who is recorded at Limpsfield in 1351. The document that shows him in Limpsfield is in the assize rolls (held at the National Archives), and was transcribed in a book of 1908 by an American historian, Bertha Haven Putnam, a doctoral graduate of Columbia University in New York.

Putnam's book is about the Statute of Labourers, which was a law enacted by King Edward III following the Black Death. It imposed fines on labourers who asked for higher wages and sought to move to other parishes. Under this statute, Robert Belknap imposed fines on several

Memorial card of Robert Bellnap
(my great-great-great-great-grandfather)
from 1897.

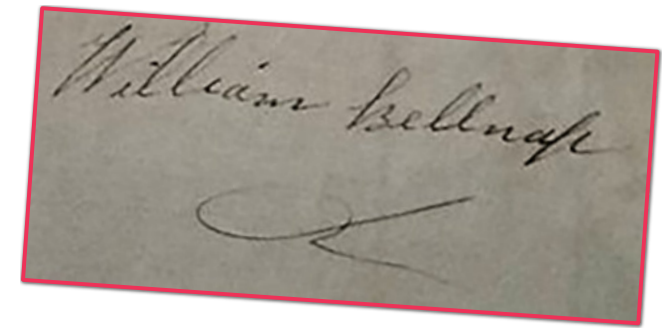


Limpsfield labourers including a 'Nicholaus de Staffhurst' (whose name refers to Staffhurst Wood) and 'Walterus Notfeld' (whose name refers to Nutfield), doubtless a relation of John Nutfeld, who owned the medieval hall house now known as Rosewell Cottage during the late fifteenth century. The court record noted that Limpsfield was in the liberty of Battle Abbey, which had owned its manor since the time of the Norman Conquest. The labourers who were fined undertook to remain within the liberty and to accept the wages prescribed in the statute.

Further research led me to discover that this was not the end of Robert Belknap's association with Limpsfield. In 1352, he was appointed steward of Battle Abbey. This meant that he was

responsible for the management of the Abbey's extensive holdings across Sussex, Kent and Surrey, including Limpsfield and its dependent manor of Willey (a portion of Chaldon). So Robert Belknap would have convened Limpsfield's manorial court and exerted authority over the tenants of the manor. In short, he was in charge of Limpsfield until being appointed Chief Justice in the 1370s. Additionally, he was lord of the manor in the nearby Kent parish of Keston, and briefly held part of the manor of Cudham. However, his land was confiscated after he was exiled to Ireland. He eventually returned to England and is almost certainly buried in Keston parish church, where a carpet has been placed over his probable grave.

Signature of William Bellnap
(my great-great-great-great-uncle)
in an 1866 letter.



The coincidence of this discovery is quite extraordinary for my family. Having believed that my parents were newcomers to Limpsfield, we find that a family member was effectively running its manor during the second half of the fourteenth century, and that the name of Sir Robert Belknap was familiar to Limpsfield's residents almost two centuries before that of Sir John Gresham, to whom the manor was granted following the dissolution of Battle Abbey in 1538.

So in one sense it has been a return rather than a new departure, though the Statute of Labourers has thankfully long been repealed and the manorial system abolished. It is amazing to think that two buildings in Limpsfield – St Peter's Church and Old Court Cottage – would

have been familiar to Robert Belknap, and that we walk in his footsteps on a regular basis. There is evidently much more to discover about Limpsfield's history than meets the eye.

Dr Nicholas Dixon is a professional genealogist and house history researcher in London. He studied history at the universities of Oxford and Cambridge, and was awarded a PhD for a thesis concerning the history of the Church of England in the nineteenth century. He conducts research projects for clients as well as giving talks about historical and genealogical subjects.

*See his website - **drnicholasdixon.com** - for more information.*

Friends of Limpsfield Common



Maintaining the legacy for all of us

The last year has been a busy one!

Since our last update, and working hand in hand with the National Trust, 8 car parks now have brand new oak information boards (made by NT volunteers). They all have new information panels too! On one side is a generic map showing the whole of the Common and where you are on it. The other map is specific to the area around the car park - and where relevant showing new trails you can use too!

On the right hand page is the new Board at High Chart car park (that was also enlarged last year).

The Family Activity Trail was also launched last summer – here is the link:

<https://limpsfield.org/friends-of-limpsfield-common-family-activity-trail/>



The good news is we are now road testing the Easy Access Trail!

The Friends of Limpsfield Common and the National Trust have installed an additional trail aimed at providing Access for members of the community who need some support visit our Common. The new Easy Access Trail, which also starts at the High Chart car park is now installed and being road tested!

The Easy Access Trail will be fully launched in the summer of 2023 –

but watch out on the Friends of Limpsfield Common Facebook page for more updates.

With thanks to our tester, Julie Ludbrook, who is a member of the Tandridge Access Group has MS and uses a mobility scooter. Julie loved the route and thought it very doable!

Julie said *"It was a pleasure to test the Easy Access Trail and a big thank you to the Friends of Limpsfield Common for taking the time and effort to make what can often be an abortive trip very easy to use. I don't get the chance to*



do this very often as there are not that many woodlands that are accessible. It was wonderful using the trail on my mobility scooter and being out in the woods amongst nature”

Why not join us? To become a Member of the Friends of Limpsfield Common please complete our

online membership form: <https://form.jotform.com/202643003650341> or contact us at friendsoflimpsfieldcommon@gmail.com

And visit our Facebook page: www.facebook.com/folimpsfieldcommon

Maggie Morgan Clist

The Barn Theatre



Sat 10th June 7.45pm	The Hijacked Hollies <i>Playing a string of Hollies classic hits with a few more obscure favourites thrown in for good measure</i>	Tickets: £22.00-£25.00 from www.barntheatreoxted.co.uk
Fri 23rd - Sat 24th June 7.30pm	Olivia - Glow <i>This brilliant and innovative musical, set in Victorian times, traces the steps of Olivia from down-trodden orphan to star of the stage (A Juniors Production)</i>	Tickets: £10.00 from www.barntheatreoxted.co.uk
Fri 30th June - Sat 1st July 7.30pm	Godspell JR - Glow <i>Prepare Ye for the timeless tale of friendship, loyalty and love based on the Broadway musical that inspired a generation (An Intermediates Production)</i>	Tickets: £10.00 from www.barntheatreoxted.co.uk
Thurs 6th - Sat 8th July 7.30pm	Grease - Glow <i>Since its electric Broadway and West End debut in the 70s, Grease has remained one of the world's most popular and enduring musicals, with an unforgettable rock and roll soundtrack that defined generations (A Seniors Production)</i>	Tickets: £13.50 from www.barntheatreoxted.co.uk
Thurs 20th - Sat 22nd July 2.30pm (Sat) and 7.30pm	A Night at the Musicals <i>- Oxted Musical Theatre Company A wonderful night of West End Hits celebrating OMTC's 75th Anniversary year</i>	Tickets: Students £12.00, Others £18.00 from www.barntheatreoxted.co.uk
Wed 9th - Sat 12th August 2.30pm (Sat) & 7.45pm	Chitty Chitty Bang Bang <i>- Kenley Holiday Workshop With familiar tunes and quirky characters, we bring the beloved film "Chitty Chitty Bang Bang" to the stage</i>	Tickets: £12.00-£18.00 from www.barntheatreoxted.co.uk

Information pertaining to all the above shows can be obtained from: www.barntheatreoxted.co.uk or 15a High Street, Westerham. Kent. TN16 1RA. 01959 561811

Limpsfield Memorial Stores

This year Limpsfield Memorial Stores will turn 24 years old and we are more than ever looking forward to working hard to ensure a sound future for the shop so that it will continue to serve Limpsfield and beyond for many more years to come. Run as a community store, staffed almost entirely by volunteers, we are pleased and proud of our contribution to the surrounding community by providing much needed services and provisions.

It became obvious to us just how much we were valued during the Covid years when we were often praised on how much of a lifeline we were to those who were shielding or just unsure about venturing further afield for their shopping needs. Additionally we were able to continue operating as a Post Office with all of the services that we all need on a daily basis.

We are fully committed to keeping this vital resource open and are excited at some changes we are making within the daily operation,

with the aim of providing a truly great local amenity. We are always restocking and rethinking what we sell in line with our customer's needs. To that end we would like to invite every member of the community to come and see us. We would really love to show you





around our great little shop. We are always keen to hear of any changes that you feel we can make to ensure this is your “go to” local and we really want to keep our footfall levels up. Never forget that the Post Office provides banking services (if your local bank has closed) including all posting services, foreign exchange, bill payments and so on.

Like every small business we are experiencing challenging times. If you would like to help support us, consider popping in and seeing what we offer - shop with us, use our

Post Office services, become a member (for £10 - forms are in the shop) or consider making a one off donation or even including us in your will.

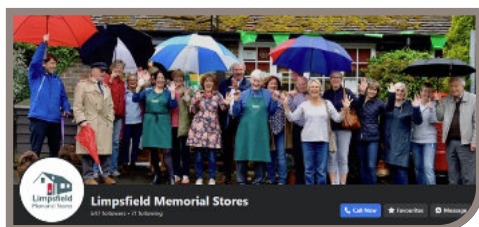
We always need new volunteers to help us run the shop. We only need you to be keen and friendly. We particularly need anyone who is keen to do some basic level training to become a Post Office volunteer. Do come in and talk to us if you think you might fit the bill or call us on the number below. We are passionate about being a part of this village.

High St, Limpsfield, Oxted RH8 0DT
T: 01883 713306

limpsfieldstores.co.uk

Find us on Facebook and Instagram

Bridget Glynn-Jones



JUDGING DATE

this year it's Thursday 13 July in the afternoon

Please could you make your gardens as colourful as possible, and allow some wild flowers to flourish - gardens in England are vital to support biodiversity, as they cover a huge area.



This is our eighteenth entry into the RHS South and South East in Bloom competition. This year we have decided to reflect the King's interest in the environment and sustainability. We are developing as much natural wild flower and diversity of planting as we can in our comparatively small area.

Our planting will be colourful, and pick up the colours of the flowers of the four countries of the British Isles - the rose for England, yellow for the daffodils of Wales, shamrock and blue flax for Ireland and the thistle for Scotland. There are now four troughs on the bank opposite the church and they pick up these colours.

We are also celebrating the life of Norman Robson who died in September 2021. Norman lived in Granville road and produced a worldwide detailed study of the Hypericum. The genus contains approximately 500 species divided into 36 sections. We have planted some hypericum in the village.

Do get in touch if you have questions or you would like to help in any way
Ann Osborn: annosborn99@gmail.com Mobile: 07981 213889



Are we really in the summer term? It is very hard to believe that the children are two-thirds of the way through the year already. They do say 'time flies when you are having fun!' The time has just disappeared. Over the last term the children have shown us how amazing they are. They have persevered, risen to challenges and delighted us with their many talents. We have seen creative artists, listened to promising musicians, and watched budding sporting champions.

As we head (hopefully) into warmer and longer days, the children will continue to have a whole host of activities to look forward to. It may be summer, but we certainly do not stop!



Firstly, as with the rest of the country, we will be celebrating the King's Coronation. The children have already been preparing for this by making a wonderful piece of artwork which will be displayed in the waiting room at Hurst Green train station. What an honour. We will be marking this memorable occasion with a day of coronation celebrations, ending with cake! (For who doesn't love cake?)

Our reception children will soon be taking a trip to Gatton Park to learn about all things natural, exploring the beautiful surroundings and probably getting a little bit muddy. The Year 1 children will be heading off to Godstone Farm to explore the delights that await them there.



We do hope that you all enjoy the summer term as much as we are looking forward to it.

With our very best wishes

Lenia Greenaway
and the Limpsfield School team



Other exciting events include our Sports Day and the Limpsfield Village Fete - save the date: Saturday 1st July. The Year 2 children will also be looking forward to many activities as they will join with other children from the local schools to form new friendships and alliances through a music festival and further multi-skills tournaments.



**BECOME
A SCHOOL
GOVERNOR**
and make a difference



Limpsfield C.E. Infant School's Board of Governors is looking for dedicated individuals to join the team.

If you are community-minded and have a passion for supporting the best outcomes for children, we want to hear from you. We are particularly keen to welcome those with experience of finance or HR, and people from diverse backgrounds.

Get in touch with us today to learn more about this rewarding opportunity.

THANK YOU

*'Achieving Together
in God's Light'*

info@limpsfield.surrey.sch.uk



LIMPSFIELD GRANGE SCHOOL
'together we make a difference'

News from Limpsfield Grange

As always it's been a busy year at Limpsfield Grange, especially as the school has been featured in two high profile BBC documentaries resulting in a huge amount of interest and admission enquiries.

As the only school of its kind in the UK it's obvious there's an overwhelming demand for more schools like us, especially as female autism is now no longer under the radar ... if only we could take more students!

In January we welcomed East Surrey MP and Parliamentary Under Secretary for Children, Families and Well-being Claire Coutinho to the Grange. It was good to spend time with her explaining what we do, discussing what more can be done to support our work



locally, and to hear first-hand the challenges we face in the current economic climate. In March Claire invited Headteacher Sarah Wild to Parliament for a Neurodiversity Celebration Week roundtable – a great opportunity to meet with other academics, teachers and charities.



February saw Chis Packham's highly acclaimed BBC documentary *Inside our autistic minds*. Chris visited the Grange last summer spending time filming, chatting with students and saying hello to our

goats! Needless to say we're all super fans of Chris for the work he is doing increasing awareness of autism and are so proud to have been included in a programme that has had such a huge impact.

In March *Christine McGuinness: Unmasking my autism* was also aired on the BBC. Christine's story is very similar to so many girls and women and her explanation of masking her

autism, and the pressure that brings with it, was very powerful. When Christine spent time with us she was clearly moved talking to students and meeting the team

and she left saying "I wish I had come to a school like this." Both documentaries are available on BBC iPlayer if you missed them.

At the end of March Louise and Rosalind



from the *Tandridge Independent* kindly came into school to run a workshop on creative writing. They were so impressed with the students' articles they have been published in recent editions and the students have been thrilled to see





their words in print and online.

We were also invited by the Hurst Green Creative Community, along with other local schools, to take part in their Commemorative Coronation Display at Hurst Green Station and we're royally proud to see our artwork on public display.

Central to everything we do of course is the delivery of the national curriculum, hand in hand with our very own WACI (Wellbeing – Achievement – Communication – Independence) curriculum.

Education is a challenging world at the moment with funding failing to keep pace with in-

creased costs (we have a current in-year budget deficit of £117,000) and huge problems recruiting and retaining staff. The effects of lockdown continue to be felt especially when it comes to low reading abilities.

The average reading age for a GCSE exam paper is 15 years and 7 months but assessments at the start of the new academic year identified we had some students joining the school at 11 years old with reading abilities of below 6 and 7 years old. The school acted immediately and put in place a Reading Intervention Programme and thanks to a generous donation from the Link Porter Trust we were able to purchase a new library of books for the programme. At the end of the Spring term, 14 of the intervention students were retested and on average the students had made a staggering 16-month progress in a 7-month period. There's still a long way to go but

thanks to the Link Porter Trust we are making headway.

It goes without saying that grants and donations are a lifeline for the school at the moment enabling us to continue our outstanding work and we are always grateful for all the support we receive from the local community.

If you would like to find out more about the Grange simply visit our website at www.limpsfieldgrange.co.uk or contact me, Kerry Munroe, Fundraising Lead at mrs.munroe@limpsfield-grange.surrey.sch.uk or call 01883 713928.

Kerry Munroe



THE LIMPSFIELD SUMMER FETE

Saturday 1st July 2023 12noon - 4pm

To be held on the Glebe Meadow

There has been an absence of the annual Summer Fete in recent years due to Covid so all the more reason to look forward to this community event which is now only weeks away. Plans are in place for a fun filled day of activities for everyone of all ages. This is an event organised jointly by St Peter's Church and Limpsfield School and all money raised divided between the two.

There will be everything you would expect at a village Fete including: Tombola, raffle, refreshments, dog show, dancing display, punch and judy, pimm's, children's games and activities of

all shapes and sizes, all types of stalls including, cakes, books, plants, traidcraft, bric-a-brac.

If you would like offer your help on the day or to bring along a stall then please get in touch or alternatively just turn up on the day to enjoy and take part in all that is happening. We look forward to welcoming you!

For more information contact the parish office or email:

Joy Moore:

contactjoymoore@aol.com

Nila Spiller:

nilaspiller@gmail.com

All proceeds go to the Limpsfield School Association & St Peters Church
Glebe Field, opposite St Peter's Church, High St, Limpsfield, RH8 ODG

ART IN JUNE

OPEN STUDIOS

www.artinjune.org

Art in June is now here!

From 2nd to 18th June local artists will be opening their studios to welcome you to see the work that they have created over the past year.

Our local studio is Kate Tullet's **Art 4 All** on the High Street which is well worth a visit. She will be welcoming people from

- Sat 3rd, Sat/Sun
- 10.30am till 5pm,
- Wed/Thur/Fridays
- 11am till 4pm

Kate is launching her new book, *Turning Tides*, on 21st June, 7-10pm. For details of all the local open studios taking part go to <https://artinjune.org>.

Titsey Place

OXTED, SURREY

Become a guide at Titsey Place and join the volunteer guiding family.

Titsey Place is an amazing historical house close to Limpsfield with a fascinating past and a fabulous display of art. Open days are Wednesday and Saturday from 1pm to 5pm from mid-May to late September. We are looking for more volunteer guides to join the current team. No experience is necessary, just enthusiasm and an ability to deliver the story throughout the house, as full training will be provided. We can be flexible on dates and the number of days in order to accommodate you. We pay travel expenses and a delicious tea in the tea rooms afterwards.

To find out more email the head guides via office@titsey.org or call Karen on 07876 200066



At Limpsfield C.E. Infant School,
you can expect:

Christian values guiding a nurturing,
family environment.

Active and steadfast commitment to
children's wellbeing.

Remarkable setting within National
Trust countryside.

Exceptional learning standards and
development opportunities.

'Achieving Together in God's Light'



W: www.limpsfield.surrey.sch.uk | E: info@limpsfield.surrey.sch.uk

An appeal from Titsey Place
for more volunteer guides



LIMPSFIELD VILLAGE

If you have been to Limpsfield Village recently you have probably noticed the pillar box topper at the Memorial Stores. This was created by the ladies of the W I and they also adjusted the Jubilee Crown outside St. Peter's Church to become a Coronation Crown!

At our May meeting we were treated to a splendid Coronation buffet followed by a Talk entitled *The Making of a Monarch* which gave us much information and glimpses of behind the scenes concerning the Coronation.

Maybe the highlight of the afternoon was the cutting of the amazing cake which had been produced by a Member's daughter in law – it tasted as good as it looked!



Limpsfield W I meet on the first Wednesday of each month at 12.30 in St. Peter's Hall. We start with a "bring your own" snack lunch and the formal meeting starts at 2 pm.

During the year we have a full calendar of Speakers and now look forward to the June meeting when we will hear a Talk on *Memories of the 1950's, 60's and 70's* and July when the subject will be *Arts & Crafts in the South East*.

Other activities include Book Clubs, Walking Groups, Bell Ringing, Outings, Knit & Natter and Ladies who Lunch.

We warmly welcome new Members and if you are interested please contact, as below.

Maureen Bunn
maureenbunn37@gmail.com
 07745 444388



COME LEARN, LEARN, LAUGH With us at Westerham U3A

We are delighted to welcome new members and have many and varied interest groups. We are delighted to invite you all to join us on Thursday June 8 when we shall be celebrating our 10th anniversary in Westerham Hall from 2pm to 4.30pm with all the interest groups showing what they have to offer, and the ukelele group performing at 3pm.

Our Open Meetings take place on the second Thursday of the month at Westerham Hall at 2pm and on May 11 we were entertained to a very informative talk by Dudley Nichols on DH Lawrence (1885-1930). Dudley's aunt was Louie Burrows whom Lawrence met at Nottingham University and to whom he was briefly engaged. Whilst Lawrence's first novel, *Sons and Lovers*, was based on his own early life and his relationship with his mother, the Burrows family seem to have been his inspiration for



the Brangwen family in *The Rainbow* and *Women in Love*, and Will Brangwen bears a strong resemblance to Dudley's grandfather. Lawrence's letters to Louie were revealed in 1962, after her death and Dudley was inspired to research Lawrence, his travels, and the inspirations for his novels.

On a lovely sunny in early May, members were treated to a behind the scenes tour of Coolings Garden Centre, Knockholt, and a delicious cream tea.

Membership is only £20 per annum (£35 per couple) with a £2 fee for refreshments at Open Meetings or events taking place at the Hall. All details can be found on our website at www.westerhamu3a.org.

Wynne Gifford



Oxted & Limpsfield Music Society

Club Evenings

Club Evenings formed a significant part of the Society until 2011. They were more intimate concerts given in the homes of local supporters who had rooms large enough to accommodate an audience of twenty or more, and members were able to attend free of charge. The concerts were often performed by local musicians, a few of whom were on the O&LMS committee at various times. Long standing Limpsfield residents may remember some of the following people who were involved in the Club Evenings from the 1970s onwards.

Miss Callister, headmistress of St Michaels School, Limpsfield, venue for many of O&LMS concerts from the 1950s onwards, was O&LMS Vice Chair during the 1960 and 70s, and her successor, Dr Long, and his wife, allowing concerts to be held in the new hall, also hosted some Club Evenings, the one in February 1985 featuring the Guildhall String ensemble which went on to record a number of albums.

Ronald Bawtree head of Hazelwood School where the O&LMS has had the majority of its main concerts this century, was a keen tenor singer himself, and in March 1976 he and his wife Christiane hosted an evening of German Lieder, the start of many other Club Evenings held in the school.



Ann Osborn



Joan Fursden in 1970



Olivia Jageurs



Michael Barlow

Local professional musicians playing at O&LMS Club Evenings included Joan Fursdon, a piano accompanist (now living in Limpsfield Chart) who played at several Club Evenings from the 1970s onwards, Ann Osborn (currently on the Limpsfield Parish Council), a BBC Singers' soprano, whose first Club Evening in 1993 was at Gabilan House, Woldingham, and Douglas Hewett, a current Oxted flute and piano teacher who, en famille, performed flute solos, and piano duets in November 1998.

Club Evenings provided opportunities

for local young musicians to develop confidence performing to an audience. Pupils of Caterham School played at Godstone Place in 1991, whilst those from Woldingham School played with Michael Burbridge in 1992 at Edenbridge House, the home of Mr and Mrs David Lloyd. Olivia Jageurs, now a renowned harpist, first played the piano for the Society at a Young Musicians' concert which included pupils from Laverock School in 2007. David Lloyd, himself a baritone and O&LMS Chairman in the 2000s, continued the emphasis on promoting opportunities

for children's musical development by initiating the O&LMS Music Prize for a Young Musician of Promise at Hazelwood School in 2014. The most recent (2022) winner of the engraved pewter salver is George Newton.

Michael Barlow, Director of Music at Hazelwood, organist of St Mary's Westerham, and O&LMS Chairman from 2016 until his death in 2020, was another supporter of young local musical talent. As Music Adviser to the Robert Bouffler Trust, Michael organised young musicians to play after the O&LMS AGMs,

then held in the United Reformed Church in Oxted. Michael himself also performed in many Club Evenings from the 1980s, notably in those entitled '*Michael Barlow and Friends*'.

Sadly the Society is no longer able to put on Club Evenings, though we hope to see you at our concerts

which are held at Hazelwood School. The final concert of our celebratory 75th Anniversary Season will feature Guy Johnston (cello) and Mishka Rushdie Momen (piano) on **June 17th at 7.30 pm** – please see **olms.org.uk** for more details.

Katharine O'Carroll

Friends of Rotary

For the past one hundred years, the Rotary Club of Oxted & Limpsfield has been serving the local community in numerous ways, with regular fundraising events such as the Pram Race and Christmas collections that raise the funds we need to support projects such as our community grant scheme, which helps single parent families and families living with a disability.

2023 is our century year and we are reviewing our image to prepare for the next one hundred years with one that people can relate to and be part of more easily. To ensure more flexibility, we are opening our club to a wider audience in an attempt to gain the support we need from the public at large and to help

achieve this, we are expanding our membership categories.

As well as the traditional full Rotary Membership, which offers the ideal opportunity for service, there will now be a category for Friends of Rotary, enabling those with less free time who would like to team up with Rotarians every now and then to help out at some of our events and join in with the fun that full members enjoy.

There will also be a Corporate Membership for those in business or organisations who would like to contribute to the welfare of others without feeling under continual pressure to donate themselves, other than by service. This category will share a membership between two or three employees or group members who can then



Oxted & Limpsfield
Music Society

75th
Anniversary
Season

Two more great concerts in May and June

20 MAY

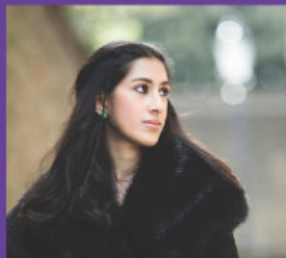
Ignas Maknickas *piano* Guy Johnston *cello* & Mishka Rushdie Momen *piano*



Schubert and Schumann



Bach, Mendelssohn and Fauré



BAWTREE CONCERT HALL, HAZELWOOD SCHOOL

TICKETS £30 / FREE FOR UNDER-25s

BUY VIA WEBSITE OR ON THE DOOR - CONCERTS START AT 7.30 PM

www.olms.org.uk



participate in Rotary as and when they are able and it will benefit those organisations commercially with enhanced publicity and integration into our society.

If you are even slightly tempted by the categories outlined above or by the concept of building Fun,

Fellowship and Fund-raising into your daily lives, do get in touch by sending an email to enquiries@oxtedrotary.org.uk or watch out for our forthcoming Open Day to be held in a local venue in the not too distant future.

John Bowers

Tandridge Handicraft Society

Make things from Nettles!

On 12th June 2023 the Tandridge Handicraft Society is hosting a talk with examples, on harvesting, preparing, and weaving nettle fibres. "*Nettles Still Got the Edge*" will be presented by Brigitte Kaltenbacher. Doors open 1:30, talk starts at 2pm. Visitors are welcome, £5 entry including tea and biscuits.

The Society meet every Monday at the Woodhouse Centre, Hoskins Road car park, opposite Tandridge Leisure Centre, Oxtead RH8 9HT (postcode for SatNav RH8 9JQ). Come and join us, we are always keen to welcome new members with similar interests. Further details on our website www.tandridgehandicraftsociety.org.uk or contact Jenny Beal on 01883 620730

The Limpsfield Directory

Around here

- Titsey Place 46

Accommodation

- David Gresham House..... 47

Antiques

- Steve Peacock - Furniture restoration 46

Bed & Breakfast

- Meads 47

Builders

- Cameron - Building & Landscaping 48
- DB Refurbishment..... 47

Catering

- Green Bean 48

Cleaning Services

- Window Cleaning - Robert 49

Critters

- Wasp Nest Removal..... 49

Decluttering/Vintage items purchase

- Maureen Bunn 49

Decorating / Painting

- Brewers 50
- C&C Southern 50

Electrician

- Murrell Electrical Services..... 54

Estate Agents

- Jackson, Stops & Staff..... 51

Event Management

- Daniel Lay 51

Funeral Services

- Alex Jones - Funeral Directors/Masons 52
- Ebutt Funeral Service 52

Garden/Property Management

- Chartfords Tree Surgeons..... 55
- Greenwells Tree Surgeons..... 55
- Linda Lewis Garden Design 56

Groceries & Post Office

- Flower Farm 53
- Memorial Stores..... 54
- Squerries..... 54

Health

- Wells Barbers..... 59
- Melissa Barford - Foot Health 56
- Body control - Pilates (Tania) 58
- Limpsfield Lawn Tennis Association 58

Home Decorating

- The Carpet Shop 57

Home Installation / Services

- Greenleaves (Fencing)..... 58
- H2O Plumbers..... 59
- PAC Handyman Services..... 60
- TN16 Handyman Service..... 67

Home Help

- ILA Life 59

Interior Design

- Custom Interior Design by Morag 60
- Peter Snashfold Furnishings..... 60

Information Technology

- IT Problem - Scott Harris..... 61
- Mr Computing 61

Member of Parliament

- Claire Coutinho 62

Motor Services

- Day's Garage 63

Restaurants

- Thai Pad 63

Schools

- Hazelwood..... 64

Venue Hire

- St. Peter's Church Hall 64

TO ADVERTISE IN THIS MAGAZINE

Joy Moore
01883 713552

Paddy Monk
01883 715758

stpadvertising.lttm@gmail.com

TO SHARE YOUR ART, NEWS, FEATURES OR REVIEWS

Please send contributions by

31st July 2023

to:

PetersNews@littm.org.uk

Don't forget to include as many
photos as you can!

Titsey Place

OXTED, SURREY

HOUSE AND GARDENS OPEN ON SATURDAYS AND
WEDNESDAYS, GARDENS ONLY ON SUNDAYS

Titsey Place, with its stunning garden, lakes, woodland
walks, walled kitchen garden and park offering panoramic
views, enchants visitors. After visiting the mansion house
and grounds, why not relax in our tea room where light
refreshments are available.

Open season: 17th May to 27th Sept 2023

House and gardens open: 1pm to 5pm every Wed and Sat.
Also end of May and Aug bank holidays. Guided tours of the
house at 1.30, 2.30 and 3.30pm (limited 20 per tour)

Tea rooms open: Wed, Sat, Sun 12.30pm

Gardens only open: Every Sun 1pm to 5pm

NGS open days: 28 May, 25 June,
16 July, 13 Aug 2023

*Please check the website for changes



Information Line: 07889 052461 www.titsey.org

ANTIQUE FURNITURE RESTORATION

ALL ASPECTS OF
FURNITURE REPAIRS AND
POLISHING UNDERTAKEN
INCLUDING MODERN
FURNITURE

30 YEARS EXPERIENCE

FREE ADVICE AND
ESTIMATES GIVEN

CALL

STEVE PEACOCK
01883 743879



**DAVID GRESHAM
HOUSE**
RESIDENTIAL CARE HOME

Our Philosophy: Caring, Honest, Open & Respectful

Since opening in 1986 we have been a leading provider of residential, respite and day care.

We are run by a highly professional team and supported by over 70 volunteers to provide
residents with a full and active life within a secure and homely environment.



For information, please contact:
Pam Packham, House Manager
David Gresham House
2 Oak Close, Oxted, Surrey, RH8 0BA

Tel: 01883 715948
Email: info@davidgreshamhouse.co.uk
Web: davidgreshamhouse.co.uk



Our Care Home was rated as:
GOOD - April 2020

Registered Society 23568R - An Exempt Charity

BED & BREAKFAST AT MEADS

*Tudor-style family home offering comfort-
able accommodation. Convenient for
town centre, Gatwick and the North*

Downs Way.

Twin bedded en-suite room - £110 per night
Double bedded en-suite room - £100 per night
Single occupancy of a double room - £85 per night

Flat no longer available to rent.

**23 Granville Road, Oxted,
Surrey, RH8 0BX**
01883 730115
e-mail: helenjholgate@gmail.com

Mrs Helen Holgate
www.bandbmeads.co.uk



LEE DUNN
DB REFURBISHMENT

- ◆ Commercial
- ◆ Residential
- ◆ Professional
- ◆ Reliable
- ◆ Quality

lee@dbrefurbishment.co.uk
www.dbrefurbishment.co.uk
Tel: 07825 560617



Cameron

Building and Landscaping Services Ltd

All aspects of general building / landscaping undertaken including:



*extensions • kitchens • bathrooms • plumbing
 tiling • plastering • flooring • patios • driveways
 brickwork • fencing • paving • renovation
 property maintenance • and much more.*



Registered and fully Insured ~ Tidy, friendly and reliable service

Free quotations and advice ~ Portfolio and references available



07855 894426 / 01883 715856



www.cameronservices.co.uk

THE WASP GUYS

Wasp nests destroyed

Cheaply and efficiently

ONLY £66
(inc VAT)

07761 232470

(half price for any extra nests)

Fully Insured

The Wasp Guys Limited



www.waspnestsdestroyed.com

Proud members of

Checkatrade.com
Where reputation matters

100%
Guaranteed



GREEN BEAN CATERING

Superb food & wine for all occasions

- ✓ A personal and professional service
- ✓ Private parties, corporate events
- ✓ Weddings, funerals
- ✓ Barbeques and celebrations

TEL: 01883 743 033

MOBILE: 07557 264 434 / 07860 639 030

EMAIL: mail@greenbeancatering.co.uk



WINDOW CLEANING

Traditional or reach-and-wash system used

I offer a reliable, efficient, polite all-year-round service at fair prices

Established 1993

Also gutters, conservatory roofs and pvc cleaned

Please call

Robert

on

01342 892406
or **07973 307161**

References on request




Downsizing or Decluttering?

Local lady would like to buy any **vintage items** such as:

- ✦ Toys
- ✦ Games
- ✦ Books such as Ladybird
- ✦ Kitchen and household items from by-gone days
- ✦ Silver
- ✦ small pieces of furniture etc.



Please call

Maureen

07745 444388

Brewers
DECORATOR CENTRES

Your choice for
paint and wallpaper



and the very best in free advice

20% OFF



YOUR FIRST PURCHASE
Pick up a Brewers Card in-store
or register for one online

Over 170 stores nationwide. Visit your local branch in Redhill

OPEN TO THE TRADE AND PUBLIC SINCE 1904

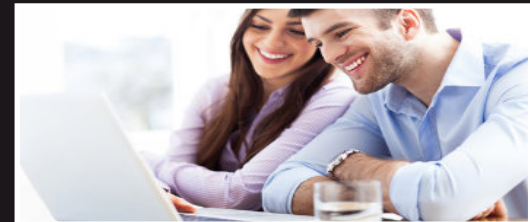


JACKSON-STOPS

jackson-stops.co.uk

YOUR PROPERTY SEEN
IN ALL THE RIGHT PLACES

01883 712375 | oxted@jackson-stops.co.uk
17-19 Station Road West, Oxted RH8 9EE



C&C
(Southern)

Property Services Ltd

Established in 1990, we have built a reputation for
quality, reliability and value.

For all your decorating needs.

Call us for a free estimate and advice.



C&C House, Unit B 10 Beadles Lane, Oxted, Surrey RH8 9JJ

Tel or Fax: 01883 716657 Mobile: 07850 649329 / 0

Email: cc.southern@btconnect.com



Daniel Lay
Event Services

Daniel Lay Event Services are a **professional party planning** and **event management** company. We can supply everything you require for an event or individual elements to make it happen. Some of our many services include:

- 🍷 Mobile Bars & Party Staff
- 🍷 Selfie Photo Booths
- 🍷 Furniture Hire
- 🍷 Draping, Decoration & Prop Hire
- 🍷 Gazebo & Marquee Hire
- 🍷 Lighting, Sound & AV Equipment Hire
- 🍷 Professional DJ Packages
- 🍷 Outdoor & Indoor Cinema Experiences

plus much more

Tel: **0800 112 0808** Email: **contact@daniellay.co.uk** Web:
www.daniellay.co.uk Instagram/Facebook: **@daniellayevents**

TAILORMADE FUNERAL PLANS FROM

ALEX JONES

Independent Family Funeral Directors

One of the few remaining family-owned, truly independent funeral directors in the area

Peace of mind for you and your family

Specify your wishes in advance

Protection against rising funeral costs

A range of flexible payment options

Arrange the send off you want

Alex Jones Funeral Directors
1 East Grinstead Road
Lingfield, RH7 6EP

01342 832534

www.alexjonesfuneraldirectors.co.uk

We also have funeral homes in;

Forest Row: 01342 822399

Oxted: 01883 730383

Edenbridge: 01732 860047



£40 M&S
vouchers
with every
plan

PROUD TO OFFER
Golden Charter



FUNERAL DIRECTORS

A TRADITIONAL FUNERAL SERVICE FROM LOCAL FUNERAL DIRECTORS

Telephone quotes available
Memorial advice and products

International repatriation specialists
Pre-paid Funeral Plans

EBBUTT FUNERAL SERVICE

HIGH STREET, LIMPSFIELD, RH8 0DR
01883 713767

15 LIMPSFIELD ROAD, SANDERSTEAD, CR2 9LA
020 8916 0694

BC BAKER & SON

15-17 HIGH STREET, CATERHAM, CR3 5UE

A member of Dignity plc. A British company
www.dignityfunerals.co.uk
Members of the National Association of Funeral Directors

FLOWER FARM



*Order online
Free delivery!*

*Only the best
local produce!*

BUTCHERY • BAKERY • DELI • FISHMONGERS • FRUIT & VEG

WWW.FLOWER-FARM.CO.UK

TEA ROOM • PUB GARDEN • BREWERY • TAP ROOM • FESTIVALS & EVENTS





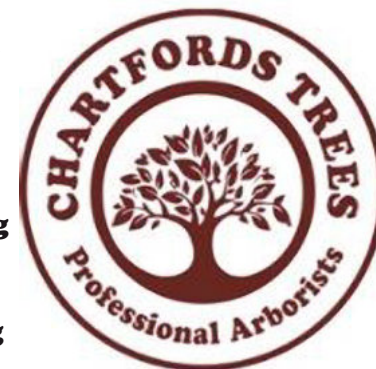
Squerryes Estate Food Market outside the Estate Deli every Saturday 9:30 am - 3 pm.
Fresh fish and seafood - sourdough and pastries - fresh cut flowers.
Garden Café - views overlooking our Rosé vineyard.
Locally roasted coffee and light bites.



Find us at Westerham Valley, Beggars Lane, Westerham, TN16 1QP what3words: eagle.invent.flats
www.squerryes.co.uk

Chartfords Trees Ltd

Fully qualified and insured Tree Surgeons carrying out all aspects of tree work and maintenance.



Tree Removal & Felling Hedge Trimming

Pruning Work

Crown Lifting
Crown Reducing
Crown Thinning

Shrub Pruning

Stump Grinding

Tree Planting

Logs & Woodchip

Safety Work

Removal of Dead Wood
Emergency Call Out

Free no obligation quotations

t 01883 460 160

m 07752 987 318

e info@chartfordstrees.co.uk

w www.chartfordstrees.co.uk

Find and review us at www.checkatrade.com/ChartfordsTreesLtd/



Local Electrician

Part P Registered
Fully qualified
Fully insured
No job too small

Free estimates

07847 395437

01959 574905

ELECSA



Fresh local produce, groceries,
newspapers and a warm
welcome!

Monday - Friday 8am to 5pm
(Post Office opens at 9am and is shut 1-2pm)
Saturday - 8am to 12.30pm
Sunday - 8am - 12.00pm
(Post Office is shut on Sunday)

Run by the community for the
community since 1999

Tel: 01883 713306

www.limpsfieldstores.co.uk

Find us in
Checkatrade.com



**GREENWELLS
TREE SURGEONS**



*Carrying out all aspects of professional tree surgery/hedgecutting,
garden/woodland clearance and maintenance, planting schemes.*

- Your local tree surgeons ● Friendly and reliable service ● No job too small
- NPTC Qualified ● Full public liability insurance



Free Quotations

OUR SERVICES

- Pruning ● Hedge cutting ● Safety inspections ● Hedging
- Reshaping ● Deadwooding ● Stump grinding ● Tree/shrub planting
- Tree removal



Stuart mob: 07545 580692 - Office: 01959 561101

info@greenwellstreesurgeons.co.uk

www.greenwellstreesurgeons.co.uk

Find us on GreenwellsTreeSurgeons yell.com



linda lewis
garden design

07736 954793
lindalewisgardendesign.co.uk

Design | Renovation | Consultancy

Melissa Barford S.A.C Dip FHPT S.A.C Dip FHPP

Foot Health Practitioner

Working towards a healthier community

For treatment in the comfort of your own home such as:

- Professional Toenail Cutting
- Callus/Hard Skin Removal
- Corns
- Conservative Treatment for Ingrown Toenails
- Verruca Advice
- Diabetic foot Assessment
- Thickened Nails
- Dry/Cracked Heels
- Advice for fungal Nails

Please call

07885 933032 / 01959 569292



THE CARPET SHOP

BEAUTIFUL
FLOORINGS

- ◆ Carpet
- ◆ Vinyl
- ◆ Laminate
- ◆ Luxury Vinyl

Your local, family run flooring solution centre, under the proprietorship of Hulya and Volkan for 17 years.

1 Station Road, Edenbridge, TN8 5HP

Tel 01732 667223

137 Station Road East, Oxted, RH8 0QE

Tel 01883 818659

oxtedcarpetshop.co.uk - Email: oxtedcarpetshop@hotmail.com

Creating Beautiful Boundaries

Fencing & Gate Specialists

in East Grinstead & Surrounding Areas

Replacing, Repairing & Protecting All Types Of Fencing & Gates, Free Estimates with Outstanding Customer Service & Workmanship.



"I was thrilled with the quality of work carried out by Lee and his team. The guys arrived onsite on time everyday. They had an incredible work ethic and attention to detail. Very professional and reliable. I would definitely recommend them."
- customer in East Grinstead

Call Lee or Andy

07944 371863

www.greenleavesuk.com



Proud Members of Checkatrade with over 420 reviews

BODY CONTROL PILATES®

Matwork Classes & Pilates for Rotational Sports

At Limpsfield Tennis Club

1:1 Reformer Programmes

Additional qualifications in:

- Pilates for Runners
- Pilates for Tennis
- Pilates for Golf
- Pilates for Equestrians
- Pilates for Performance

Contact:

Tania Turner

07793 908442



WELLS BARBERS

Est over 30 Years



MENS HAIR CUT **£9.50**

OAPS AND KIDS **£8.00**

No appointment necessary

Tel: 01883 716979

36b Station Road West, Oxted
OPPOSITE BARCLAYS BANK,
BEHIND JJ'S CHILDRENS WEAR

HOME VISITS BY ARRANGEMENT

Opening times: Mon-Weds 8.30-5.00

Fridays 8.30-6.00

Closed Sunday and Thursday



H₂O



PLUMBING

*General Plumbing
Services, Alterations &
Bathroom
Installations*

*No job too small
City & Guilds Trained*

*Call Richard on
01883 712523
or 07876 450420*

The Limpsfield Club

TENNIS | SQUASH | RACKETBALL | BADMINTON | TABLE TENNIS | GYM-LITE | BAR

SERIOUS ABOUT SPORT: GREAT FOR FAMILIES & FRIENDS

16 Tennis Courts (7 Floodlit) & Mini Tennis Court & Wall.

6 Squash & Racketball Courts (Heated & Cooled).

Badminton Hall & separate Sports Hall for Table Tennis.

Gym with the latest machine with 'Virtual Reality' programmes.

Comprehensive Professional Coaching for all sports.

Adults & Juniors welcome at competitive rates.



Web: www.limpsfieldtennis.co.uk Email: manager@limpsfieldtennis.co.uk

Limpsfield LTC, Detillens Lane, Limpsfield, Surrey RH8 0DH Tel. 01883 714079

Making a big difference with the little things



Independent
Living
Advisers



Need a little help? Let us make the difference
From cooking, cleaning, ironing or simply sewing a button,
our people* work with you to help make your life easier.

Call Cecilia on 01892 210100

Email: cecilia.trueman@ila.life

www.ila.life

* DBS checked, Fully Insured, References Available



Peter Snashfold
Furnishings

Upholstery · Curtains · Blinds

Unit 1C
Warren Farm Stables
Main Road
Sundridge
Sevenoaks, Kent
TN14 6EE

07715 206656

petersnashfoldfurnishings
@hotmail.com

Free
estimates
& fully
insured



**PAC handyman
services**

PAC Handyman Services is your
local solution to everyday
building, maintenance and
installation projects within the
home and garden.



**T: 01342 843348 | 07711
939370 pac-handyman.co.uk**

Custom Interiors by *Morag*

- **Handmade curtains** and blinds to the highest quality finish
- **Designer cushions** and throws to complement and lift your existing scheme
- Help with your fabric selection and a **full interior design service** to give you a look you'll love
- Traditional upholstery
- Full and part **project management** for house renovations, extensions and room updates



Tel No. 01883 722283
Mobile 0777 394 0422
www.morag-interiors.co.uk

Chardleigh Cottage, Pains Hill, Limpsfield, Surrey, RH8 0RG

Computer Problem?

For home or business.

Problem solving for Windows, email, viruses, internet connection, broadband and other computer related issues.

Data and registry recovery. Backup solutions.

Simple and professional advice given on all aspects of personal computing, including purchasing, upgrading and maintenance.

Computer lessons (Windows, Internet, Microsoft Office...).

Networking: secure wireless, dLAN, LAN, WAN, Active Directory.

Bespoke software and website development (e-commerce).

Microsoft
CERTIFIED
Professional

Scott Harris
BSc Computer Science
Hons, MCP, MCAD

Microsoft
CERTIFIED
Application Developer

Telephone:

01732 361234

Mobile:

07779 285839

Email:

scott@MyITWizard.co.uk



MR Computing

38 years of combined experience in IT

**Local, Professional and Family Owned
business since 2005**

NO FIX NO FEE & NO CALL OUT CHARGE

- Punctual visits at an agreed time or collection & drop off service.
- Apple & Windows computer & tablet/phone support for Business & Home.
- Reliable wireless range improvement for Home & Business.
- Most work carried out in a one hour visit. Fixed price workshop repairs.
- Repairs, speedup and maintenance, Data transfer/recovery, Computer malware/virus removal.
- New computers supplied/set up and made to feel familiar.



**Call Mark
& Sue on:**

01883 730345

or

0800 6129534

Email: office@mrcomputing.net



Website - www.mrcomputing.net
Reviews - mrcomputing.net/reviews

Claire Coutinho MP

MEMBER OF PARLIAMENT
FOR EAST SURREY



Since I was elected, I've held regular surgeries with local residents to talk about the issues that matter to them.



I've also been holding regular remote surgeries by telephone, so if you need any help or want to raise an issue of importance to you, please don't hesitate to email or call me to set up a meeting.

Claire

0207 219 5972

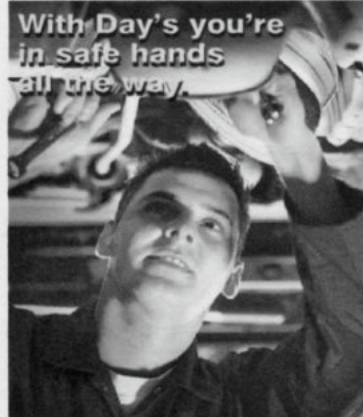
clairecoutinho.com

@claire.coutinho.mp
@parliament.uk

claire4eastsurrey

@clairecoutinho

Promoted by Tim Hall, on behalf of
Claire Coutinho, both at 6 Godstone
Road, Lingfield RH7 6BW



With Day's you're
in safe hands
all the way.

Your local one stop car repairers



✓ Services & Repairs
(all makes)

✓ Bodywork/ Car
Sales

✓ Delivery &
Collection Locally

✓ Tyres & Batteries
fitted free

DAYSGARAGE

Serving the community since 1957

Unit 6, Gardiner Business Park Little Browns Lane, Edenbridge
Kent TN8 6LH 01732 866544

Ivy Park, Ivy Mill Lane, Godstone Surrey RH9 8NE 01883 742822

17 Hurst Green Road, Oxted Surrey RH8 9BS 01883 730058

www.daysgarage.co.uk



while
you
wait!

MOT's



thai pad

Thai Tapas Bar & Restaurant

Lunch set menu
from £11.50

Sunday 2 course
set menu £14.95

5-6 Hoskins Walk, Oxted, RH8 9HR

CALL: 01883 717190

EMAIL: contact@thaipadoxted.co.uk

WEB: www.thaipadoxted.co.uk





Hazelwood School

The alphabest of Ha-zelwood

- ☐ algebra and arithmetic ☐ breakfast club
- ☐ computing and coding ☐ design technology
- ☐ experiments and explosions
- ☐ forest schools ☐ gifted and talented

www.hazelwoodschool.co.uk. Contact Nick Tappin on 01883 733841

St Peter's Church Hall and Glebe Room

High Street, Limpsfield, RH8 0DG

For regular or
occasional hire



Car parking
Disabled access



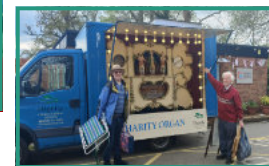
Large hall with stage
Well-equipped kitchen
with hatch to Hall and
Glebe Room
Entrance hallway and W.Cs



Smaller Glebe Room
Can be booked
separately when main
hall is in use



For availability and costs, please contact Pat Davies - 01883 716487 or email stphlimpsfield@gmail.com. Visit www.stpeterslimpsfield for more details.



Coronation Picnic

LIMPSFIELD VILLAGE

SUMMER FETE

Saturday 1st July 2023

12 Noon to 4pm

Glebe Meadow, Limpsfield

(off Limpsfield High Street)

**ADULTS £1 ENTRY
KIDS FREE!**

JOIN US FOR LOTS OF FUN!

- Selection of Stalls • Children's Activities •
- Barbeque • Sweet Tombola • Summer Crafts
- Pimms Bar • Hamper Raffle & Silent Auction •
- Dog Show • Dance Show •
- Hook A Duck • and much more!

(Don't forget to bring cash on the day)



All proceeds go to the Limpsfield School Association and St Peter's Church

Proudly supported by



**JACKSON
-STOPS**